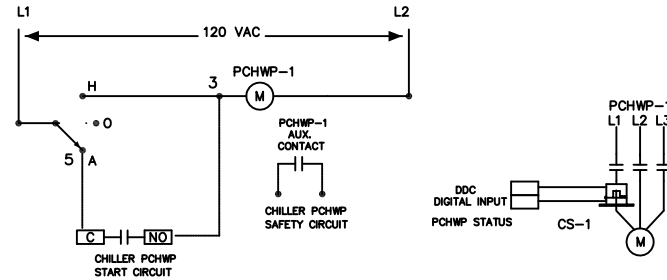


TYPICAL CHILLER WIRING DETAIL

ALL WIRING TO BE #14 AWG.  
TYPICAL FOR CHILLER - 1 & 2



TYPICAL PUMP WIRING DETAIL

ALL WIRING TO BE #14 AWG.  
TYPICAL FOR PCHWP - 1 & 2

DATE  
9/12/10

DRAWN

REVISION  
7/11/16  
RLANDRUM

DETAIL NO.  
XXXXXX-XX

SHEET

