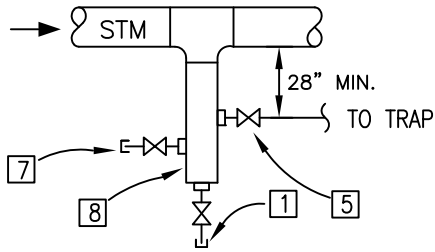
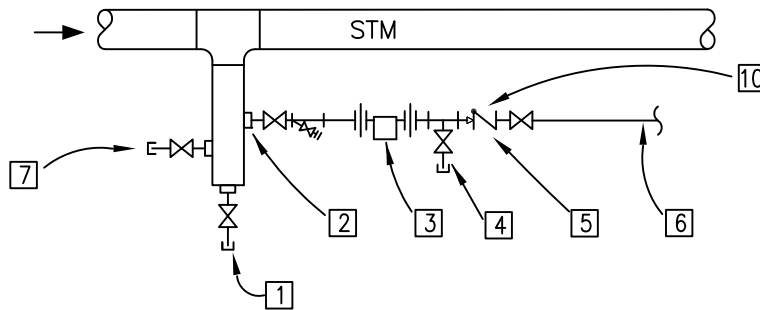


END OF MAIN DRIP LEG DETAIL



HORIZONTAL STEAM MAIN DRIP LEG DETAIL



STEAM DRIP LEG TRAP DETAIL

KEYED NOTES:

- 1 DIRT LEGS 2" AND SMALLER INSTALL 1" RISING STEM GATE VALVES AND A SCREWED CAP FOR BLOW DOWN, DIRT LEGS 2 1/2" AND LARGER, INSTALL WITH WEILDED CAP AND 1" THREAD-O-LET IN CAP WITH A 1" RISING
- 2 TRAP TAKE-OFF IS 1" THREAD-O-LETS UNLESS NOTED OTHERWISE
- 3 INVERTED BUCKET TRAP
- 4 TEST COCK INSTALLED FULL TRAP LINE SIZE WITH RISING GATE VALVE AND SCREWED CAP
- 5 RISING STEM GATE VALVES (TYP.)
- 6 FOR L.P. STEAM, PIPE TO CONDENSATE RECEIVER. FOR H.P. STEAM, PIPE TO CONDENSATE RECEIVER H.P. COND. LINE OR FLASH TANK
- 7 ALTERNATE LOCATION FOR BLOW DOWN
- 8 FOR STEAM LEGS LESS THAN 6", LEG SHALL BE SAME DIAMETER AS STEAM MAIN. FOR STEAM MAIN GREATER THAN OR EQUAL TO 6", LEG SHALL BE HALF DIAMETER OF STEAM MAIN
- 9 SAME DIAMETER AS STEAM MAIN
- 10 INSTALL CHECK VALVE IF LIFTING CONDENSATE

STEAM DRIP LEG PIPING DIAGRAMS

NO SCALE

NOTES:

1. OMIT CHECK VALVE FOR GRAVITY RETURN

CS_STD_MEC_232213_STEAM_DRIP_LEG.dwg