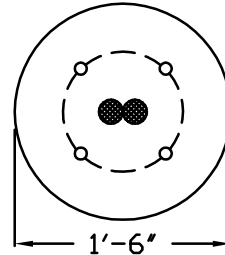


10" BOLT CIRCLE



TOP VIEW

CONNECT TO STANDARD WITH #6 BARE COPPER WIRE

BURNDY GROUND CLAMP CONNECTOR GRC58

6'-0" TO BACK OF CURB

4 - 1"X40" ANCHOR BOLTS

3-1/4"

GRADE

6"
2'-6"
5'

2"

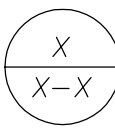
1'-6"

TWO 2" LFNC MARKED FOR DIRECT BURIAL CONDUITS ON OPPOSITE SIDES OF THE BASE PARALLEL WITH THE ROAD.

5/8" DIA X 8' COPPERWELD GROUND ROD

EXISTING SUBGRADE

COMPACTED CLASS II AGGREGATE



STREET LIGHT BASE WITHOUT PULL BOX

NOT TO SCALE

NOTE: FOR USE WHEN ONLY A TAP CONNECTION IS MADE FOR THE STREET LIGHT AND NO OTHER LIGHTS ARE SERVED FROM THIS POINT

SEE SPECIFICATION SECTION 265600 EXTERIOR LIGHTING