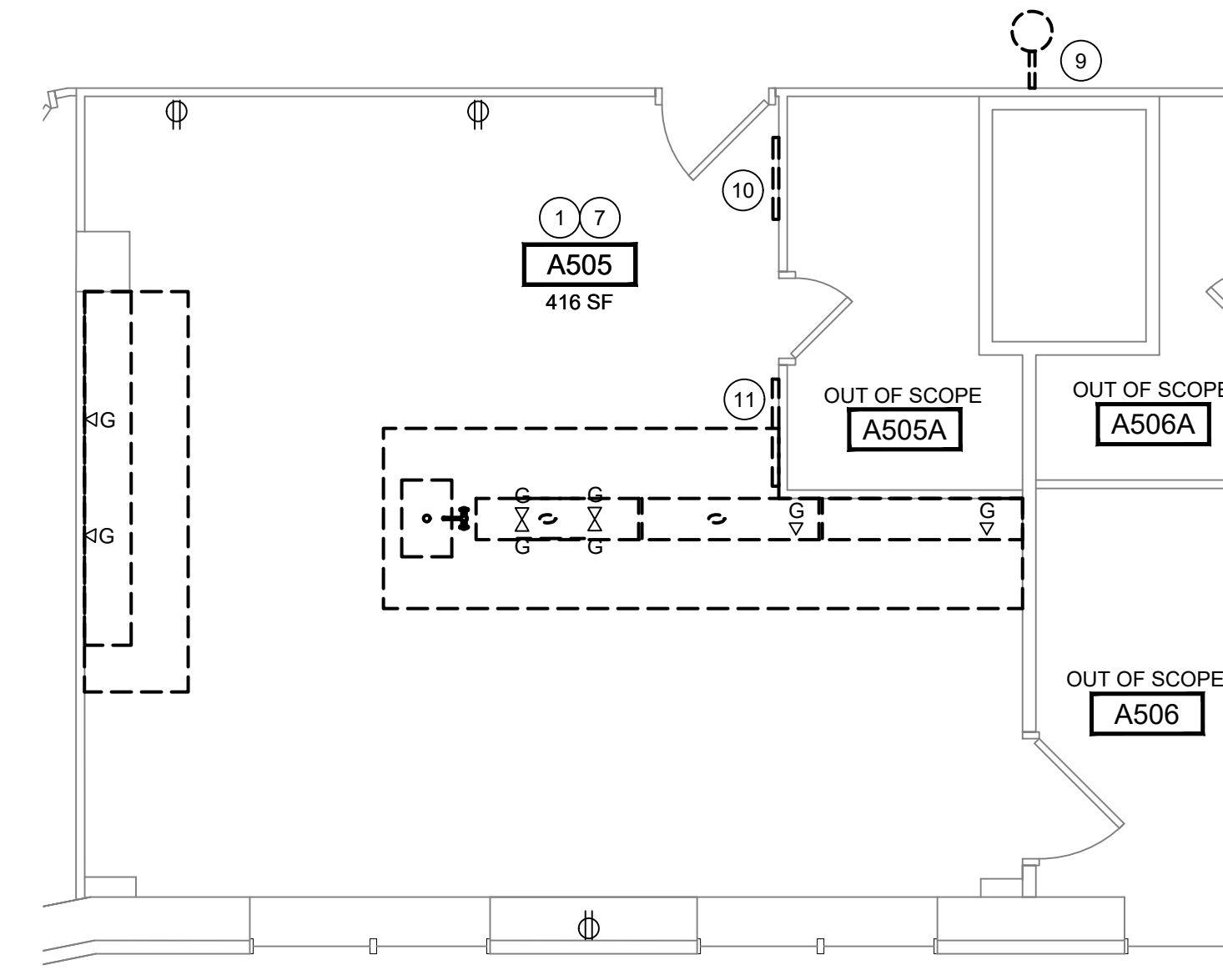


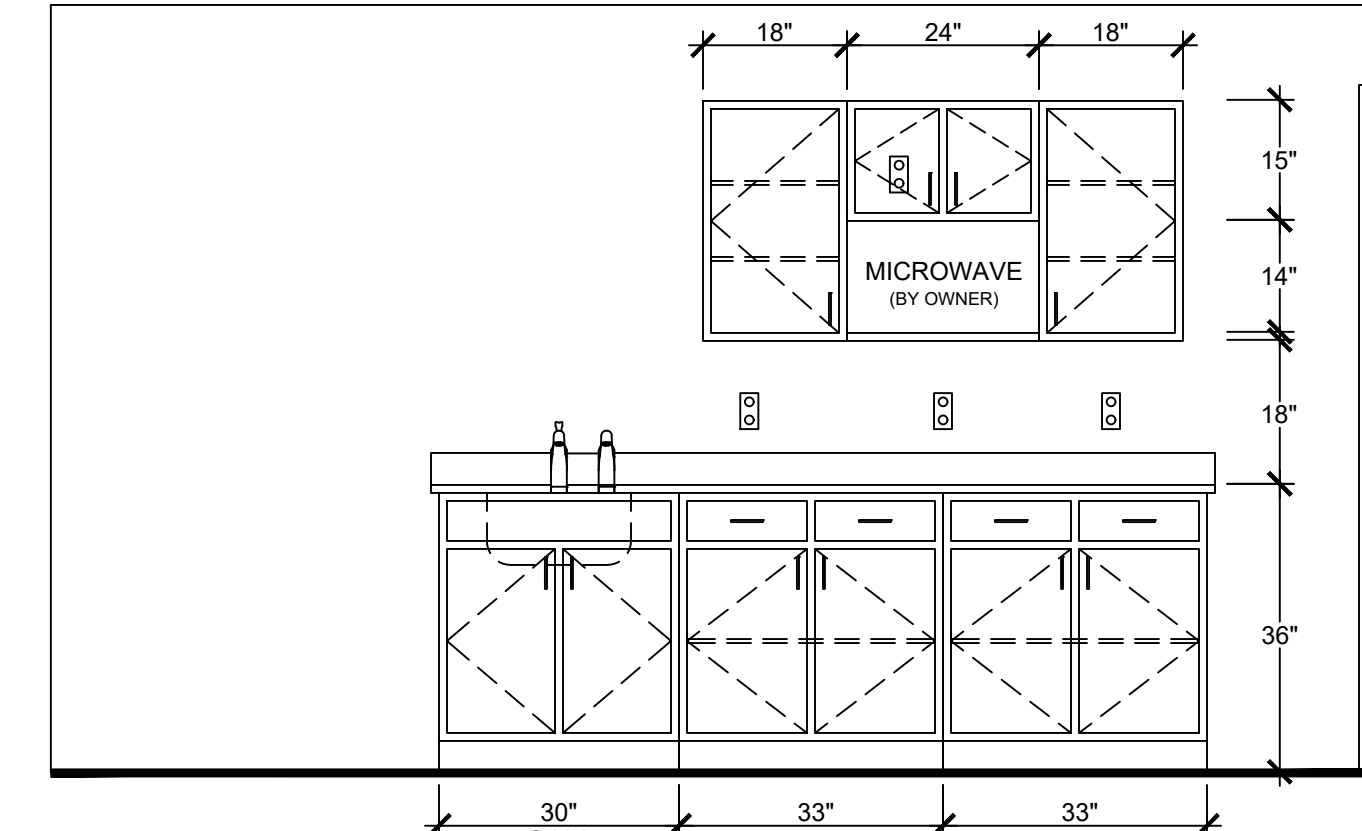
**ARCHITECTURAL DEMOLITION PLAN - ROOMS A517, A518, & A518A**

SCALE: 1/4" = 1'-0"



**ARCHITECTURAL DEMOLITION PLAN - ROOM A505**

SCALE: 1/4" = 1'-0"



**ELEVATION - KITCHENETTE, ROOM A517**

**ARCHITECTURAL GENERAL NOTES:**

- ALL WORKMANSHIP, MATERIALS AND CONSTRUCTION METHODS SHALL COMPLY WITH THE LATEST VERSION OF MSU STANDARDS FOR CONSTRUCTION. WWW.IPF.MSU.EDU
- PER MSU ENVIRONMENTAL HEALTH AND SAFETY, THE FOLLOWING MATERIALS ARE KNOWN TO BE ASBESTOS CONTAINING. PROPER REMOVAL PER MSU STANDARDS FOR CONSTRUCTION IS REQUIRED. ALL NEW WALL PENETRATIONS SHALL BE ABATEMENT CONTRACTOR. 9'x9' FLOOR TILE AND ASSOCIATED MASTIC, PLASTER OVER WALLBOARD, PIPE FITTING INSULATION, CONSTRUCTION ADHESIVE AND BLACK COUNTERTOPS AND SINKS.

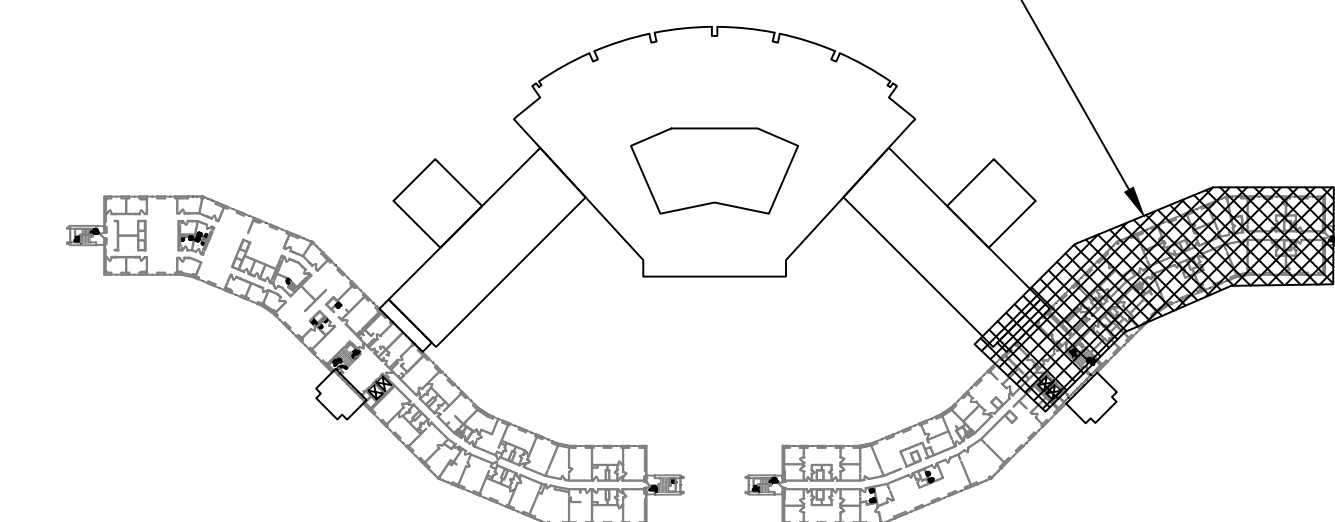
**# ARCHITECTURAL DEMOLITION PLAN NOTES:**

- REMOVE WOOD CASEWORK, ASBESTOS CONTAINING COUNTERTOPS AND WALL CABINETS THROUGHOUT ROOM.
- REMOVE WOOD CASEWORK, LAMINATE TOP AND STAINLESS STEEL COUNTERTOP WITH SINK AT LOCATION SHOWN. CAP ALL PLUMBING BELOW FLOOR AND INFILL OPENINGS AS REQUIRED.
- REMOVE METAL FRAMED BASE AND STAINLESS STEEL COUNTERTOP/SINK AT LOCATION SHOWN. UTILITIES TO REMAIN AND BE RE-USED.
- REMOVE COLD ROOM ENCLOSURE, INCLUDING INTERIOR CABINETS AND ASBESTOS COUNTERTOP. CAP PLUMBING UTILITIES BELOW FLOOR.
- REMOVE DOOR AT LOCATION SHOWN. SAVE DOOR SLAB AND ALL HARDWARE FOR RE-USE.
- REMOVE PORTION OF EXISTING WALL AT LOCATION SHOWN FOR NEW DOOR OPENING. CONFIRM EXACT SIZE WITH EXISTING DOOR TO BE RELOCATED AND NEW FRAME.
- REMOVE WINDOW BLINDS AND MOUNTING HARDWARE.
- REMOVE VINYL FILM AND ADHESIVE FROM HALLWAY GLASS INTERIOR WALL. CLEAN GLASS. (ROOM A516 NOT SHOWN, SEE SHEET 2).
- REMOVE SAFETY SHOWER WITHIN HALLWAY OUTSIDE OF ROOM A505 AND CAP PLUMBING AT WALL/CEILING.
- REMOVE COAT HOOKS.
- REMOVE WHITEBOARD.
- REMOVE DOOR FRAME AT LOCATION SHOWN.

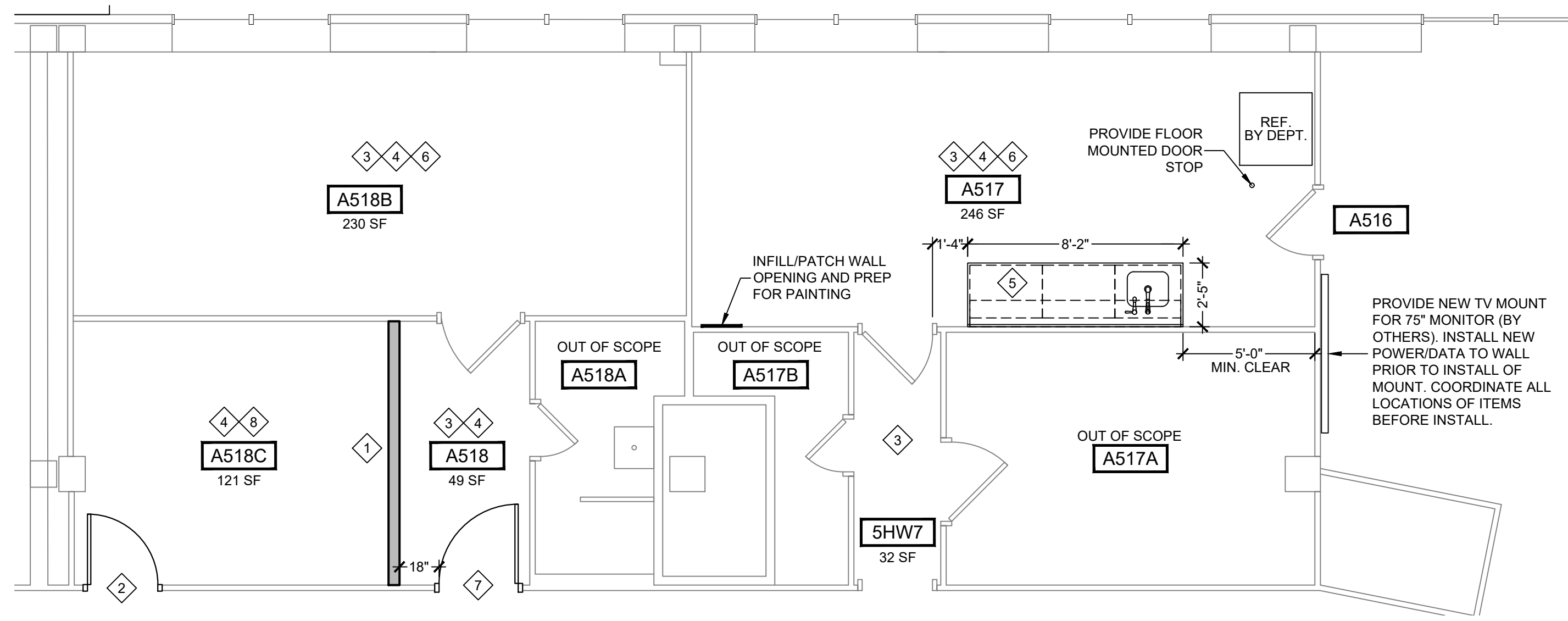
**ARCHITECTURAL PLAN NOTES:**

- PROVIDE NEW INSULATED WALLS. TO DECK (10FT) AT LOCATION SHOWN. METAL STUDS WITH 1/2 GYPSUM BOARD. PLASTER FINISH NOT REQUIRED.
- PROVIDE NEW HOLLOW METAL FRAME (TO BE PAINTED) AT LOCATION SHOWN AND INSTALL SALVAGED WOOD DOOR AND HARDWARE. EX. DOOR IS 99-1/4" X 31-1/2". CUT DOOR DOWN TO 7'-0".
- PROVIDE NEW 2'-0" X 2'-0" SUSPENDED CEILING SYSTEM THROUGHOUT ROOM. INSTALL AS HIGH AS POSSIBLE (JUST ABOVE WINDOW HEAD) USG 15/16" DOWN DX GRID WITH USG RADAR CEILING PANELS #2110. SEE CEILING PLANS.
- PATCH, PREP AND PAINT ALL WALLS, DOOR FRAMES (INTERIOR ROOM, MATCH EXISTING) AND METAL FIN-TUBE HEAT ENCLOSURE. PT-1: SHERWIN WILLIAMS, GREEK VILLA - SW7551.
- PROVIDE NEW WOOD LAMINATE CASEWORK WITH SOLID SURFACE COUNTERTOP WITH 4" BACKSPLASH AND NEW SINK AT LOCATION SHOWN. SEE ELEVATION FOR MORE DETAILS. LAMINATE: WILSONART, KINGWOOD WALNUT - 8218-38, FINE VELVET FINISH. COUNTERTOP: HANEX, OSLO WHITE, B-012. SINK: SEE MECHANICAL.
- PROVIDE NEW WINDOW SHADES, PHIFER SHEERWEAVE, OYSTER/BEIGE 2410, 3% OPENNESS. MANUAL CHAIN OPERATION.
- PROVIDE NEW 3'-0" X 7'-0" PAINTED METAL DOOR WITHIN NEW HOLLOW METAL FRAME AT LOCATION SHOWN. MSU OFFICE STYLE LEVER LOCKSET, US26D FINISH FOR ALL NEW HARDWARE.
- PROVIDE NEW ROOM NUMBER. MATCH EXISTING BUILDING STYLE.
- REMOVE EXISTING DOOR HANDLE AND PROVIDE BLANK COVER PLATE, LEAVING DOOR LOCKED.

AREA OF WORK  
ROOMS A505, A517, A518, A518A, & 5HW6

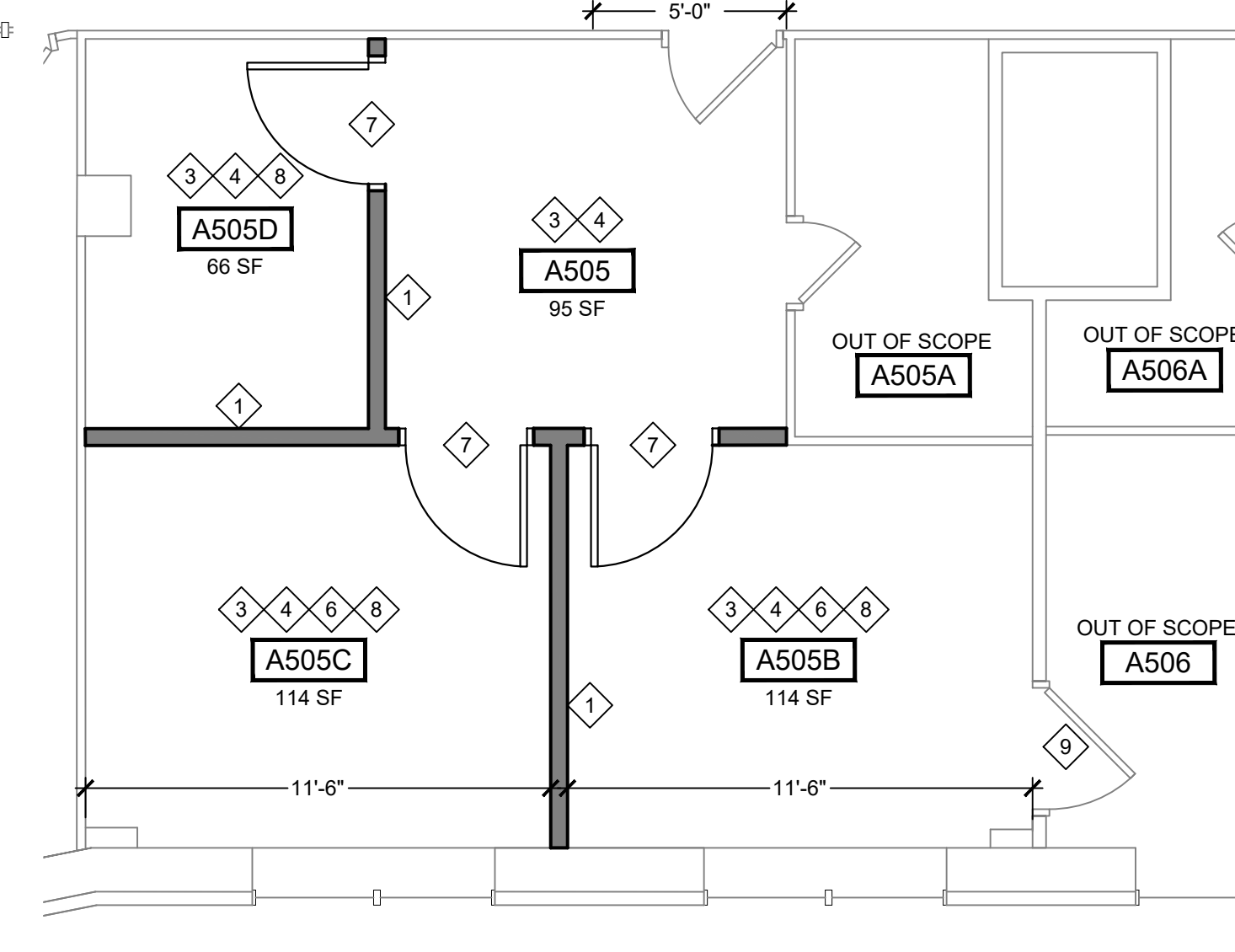


**FEE BUILDING KEY PLAN**  
FOR REFERENCE ONLY



**ARCHITECTURAL PLAN - ROOMS A517, A518, & A518A**

SCALE: 1/4" = 1'-0"



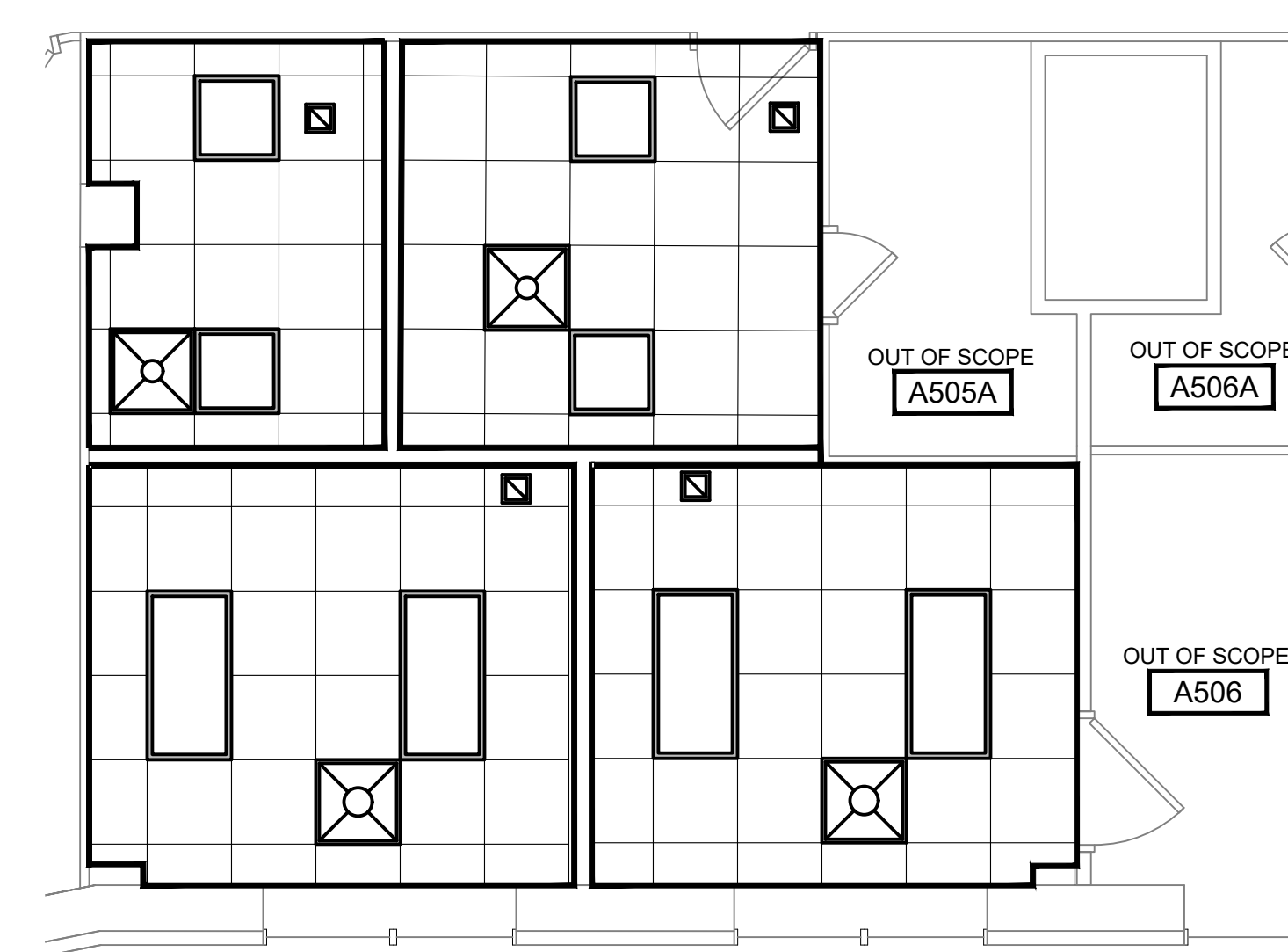
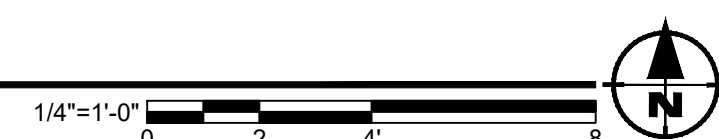
**ARCHITECTURAL PLAN - ROOM A505**

SCALE: 1/4" = 1'-0"



**CEILING PLAN - ROOMS A517, A518, & A518A**

SCALE: 1/4" = 1'-0"



**CEILING PLAN - ROOM A505**

SCALE: 1/4" = 1'-0"



MSU PROJ. NO.  
CP23087

PR. MGR. CHARLAND  
ARCH. CHARLAND  
MECH. GOERGE  
ELEC. HOWARD  
CIVIL

L.A.  
INT. DES. WHITBECK  
CONST. REP. CHARLAND  
APPR. MULLEN  
DATE 11/21/2023  
SCALE AS NOTED  
ISSUED  
RELEASED FOR BID

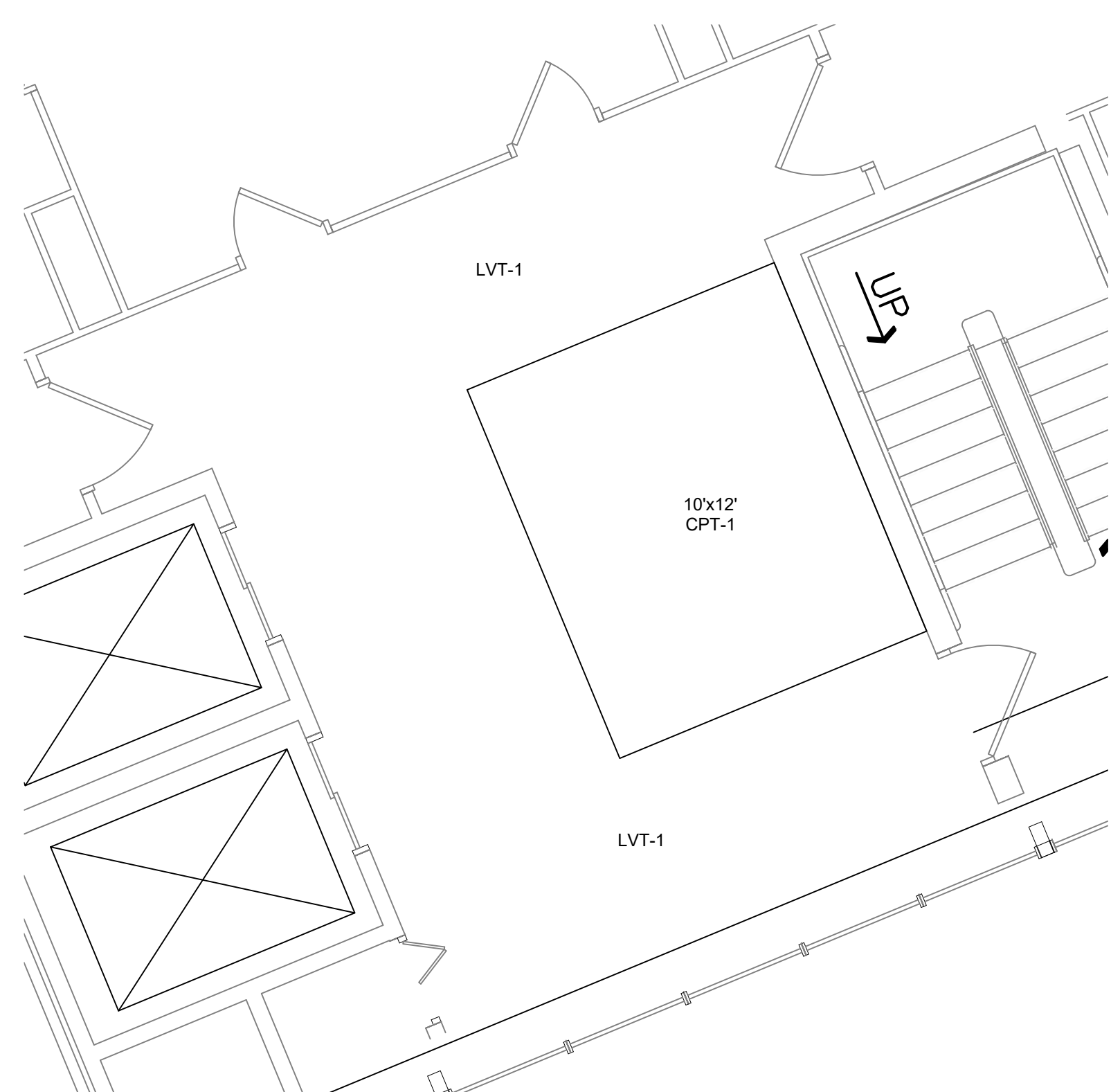
ARCHITECTURAL  
PLANS

**A-1**

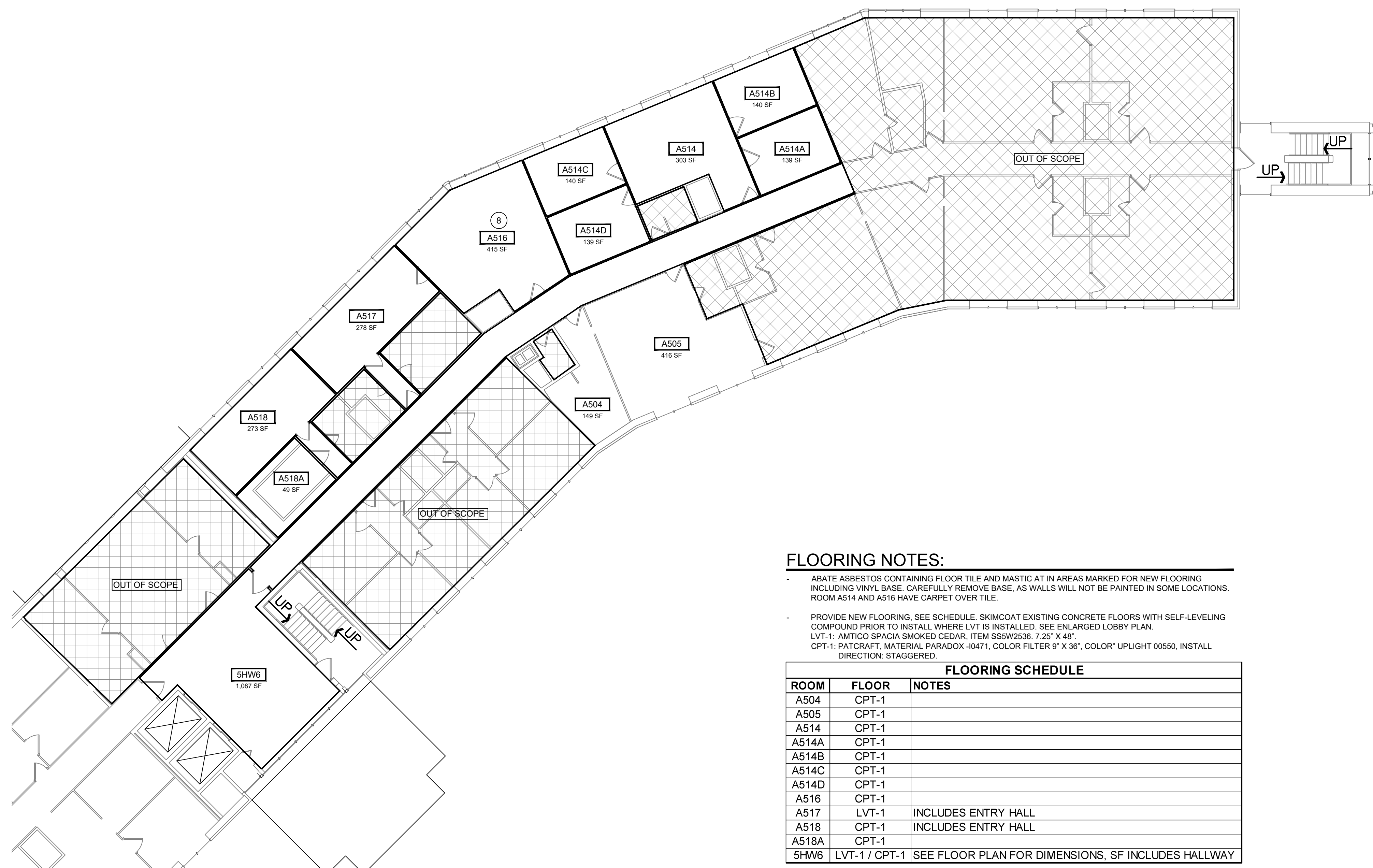
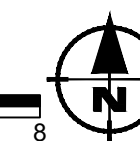
**FEE HALL**  
RENOVATE ROOMS A504, A505, A514, A516 - A518 AND 5HW6

MSU PROJ. NO.  
CP23087

PR. MGR. CHARLAND  
ARCH. CHARLAND  
MECH. GOERGE  
ELEC. HOWARD  
CIVIL \_\_\_\_\_  
L.A. \_\_\_\_\_  
INT. DES. WHITBECK  
CONST. REP. CHARLAND  
APPR. MULLEN  
DATE 11/21/2023  
SCALE AS NOTED  
ISSUED  
RELEASED FOR BID



**LOBBY FLOOR PLAN**  
SCALE: 1/4" = 1'-0"

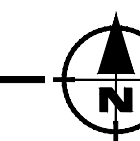


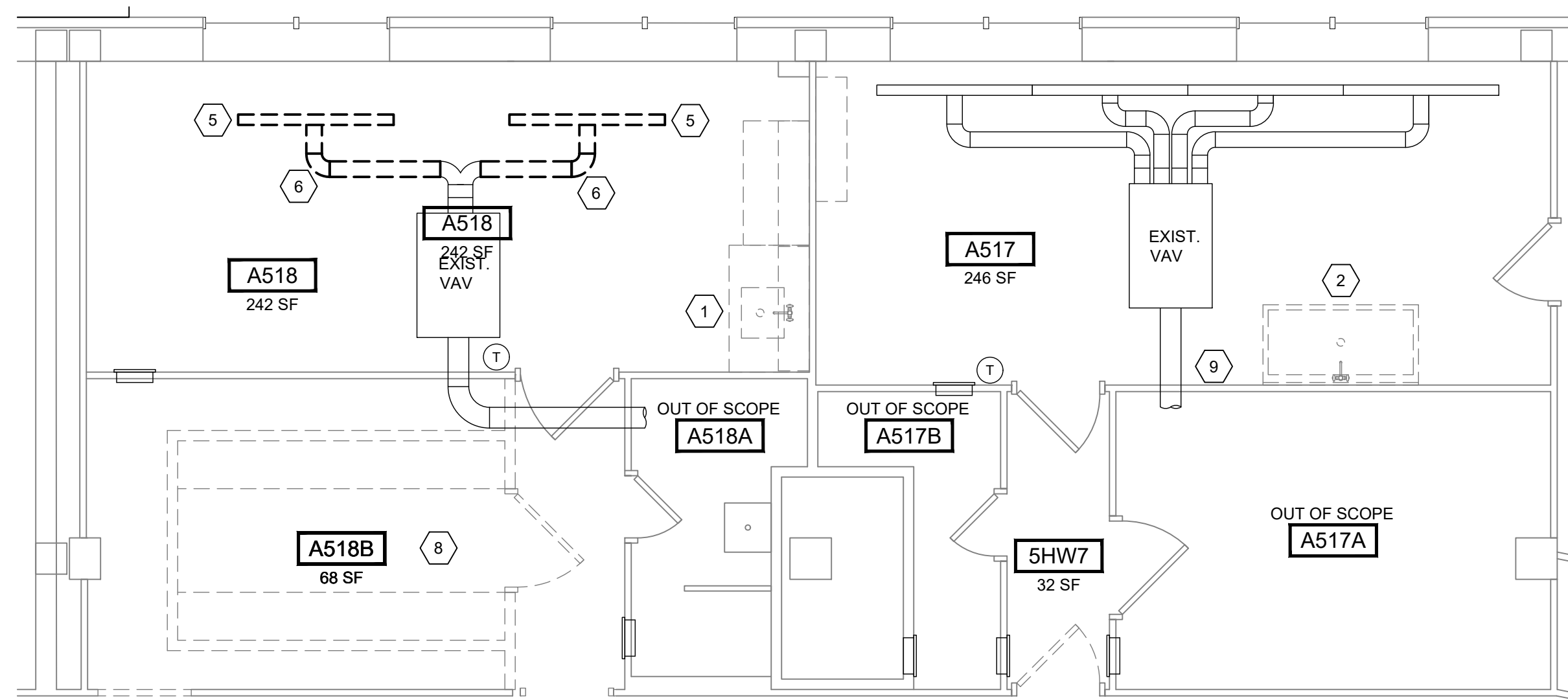
**FLOORING REPLACEMENT PLAN**  
SCALE: 3/32" = 1'-0"

**FLOORING NOTES:**

- ABATE ASBESTOS CONTAINING FLOOR TILE AND MASTIC AT IN AREAS MARKED FOR NEW FLOORING INCLUDING VINYL BASE. CAREFULLY REMOVE BASE, AS WALLS WILL NOT BE PAINTED IN SOME LOCATIONS. ROOM A514 AND A516 HAVE CARPET OVER TILE.
- PROVIDE NEW FLOORING. SEE SCHEDULE. SKIMCOAT EXISTING CONCRETE FLOORS WITH SELF-LEVELING COMPOUND PRIOR TO INSTALL WHERE LVT IS INSTALLED. SEE ENLARGED LOBBY PLAN.  
LVT-1: AMTICO SPACIA SMOKED CEDAR, ITEM S5W2536, 7.25" X 48".  
CPT-1: PATCRAFT, MATERIAL PARADOX -0471, COLOR FILTER 9' X 36", COLOR\* UPLIGHT 00550, INSTALL DIRECTION: STAGGERED.

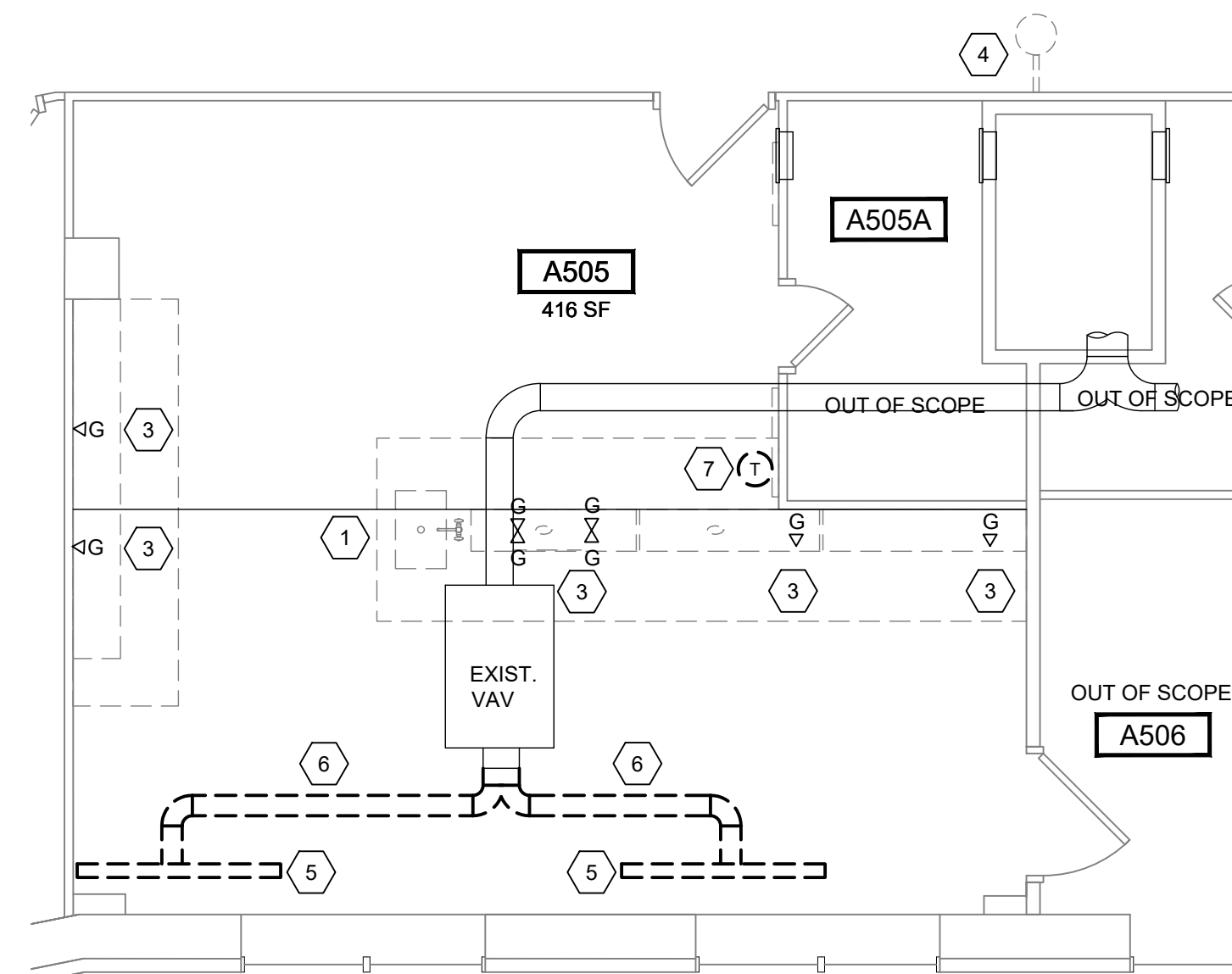
FLOORING SCHEDULE		
ROOM	FLOOR	NOTES
A504	CPT-1	
A505	CPT-1	
A514	CPT-1	
A514A	CPT-1	
A514B	CPT-1	
A514C	CPT-1	
A514D	CPT-1	
A516	CPT-1	
A517	LVT-1	INCLUDES ENTRY HALL
A518	CPT-1	INCLUDES ENTRY HALL
A518A	CPT-1	
5HW6	LVT-1 / CPT-1	SEE FLOOR PLAN FOR DIMENSIONS, SF INCLUDES HALLWAY





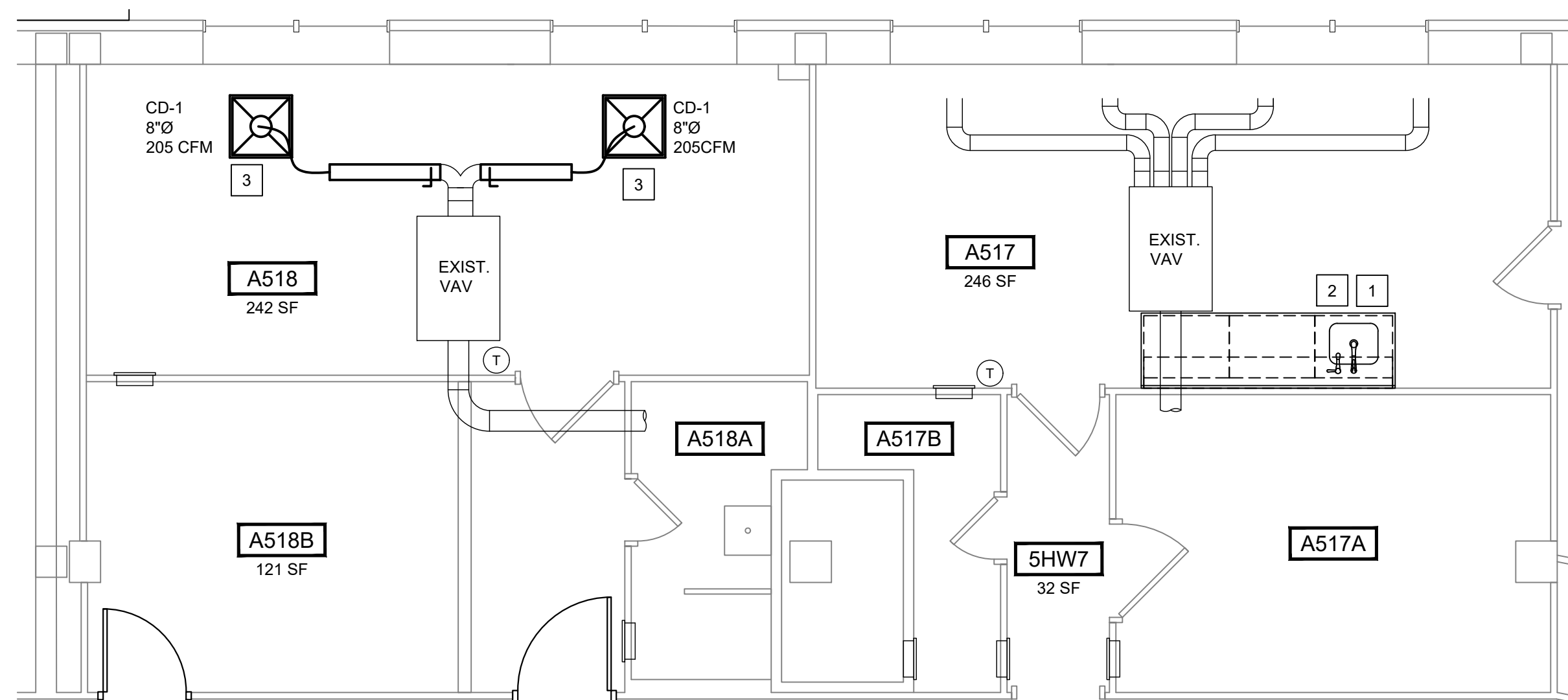
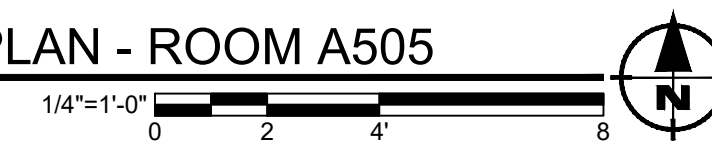
**MECHANICAL DEMOLITION PLAN - ROOMS A517, A518, & A518A**

SCALE: 1/4" = 1'-0"



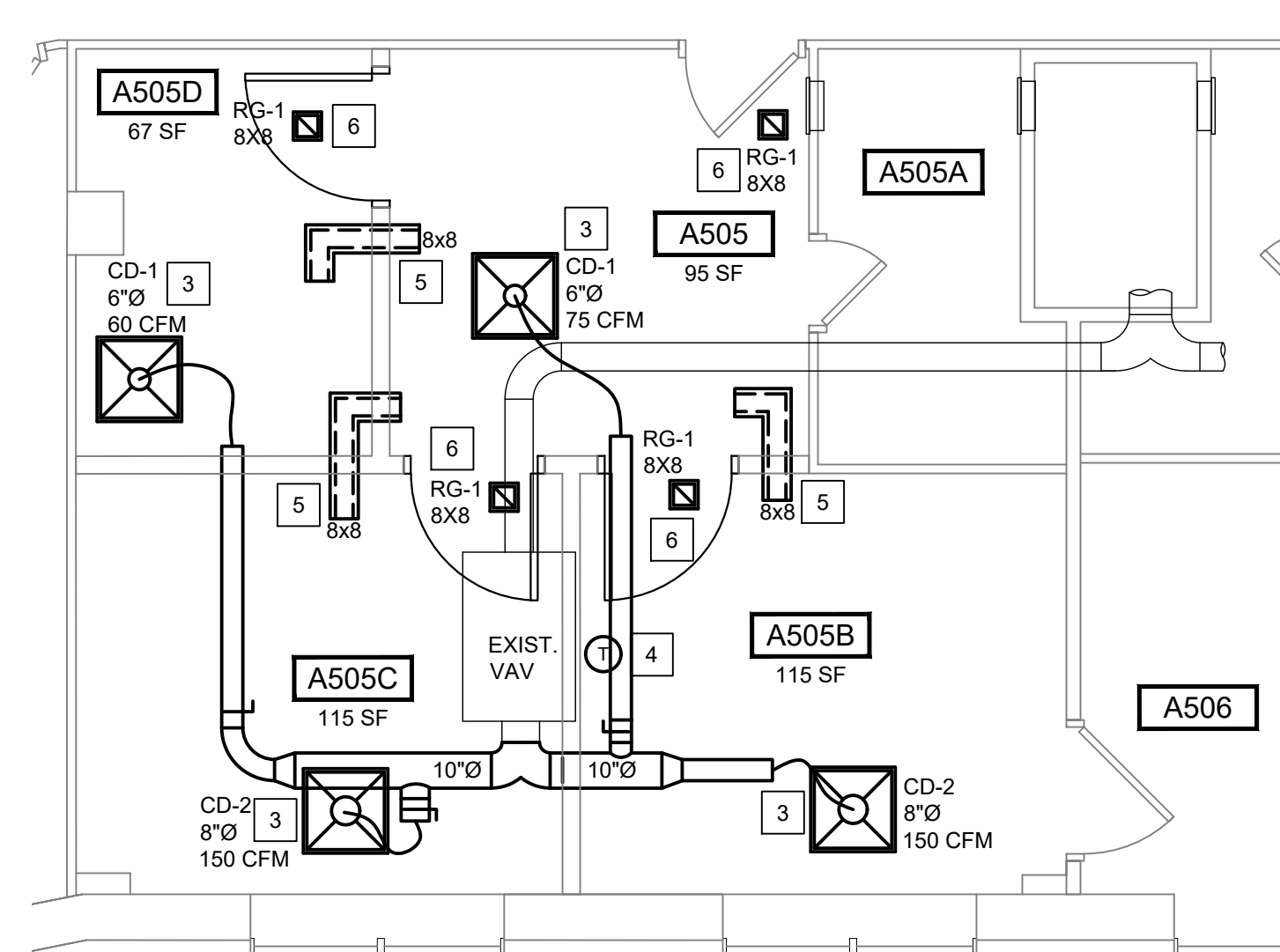
**MECHANICAL DEMOLITION PLAN - ROOM A505**

SCALE: 1/4" = 1'-0"



**MECHANICAL PLAN - ROOMS A517, A518, & A518A**

SCALE: 1/4" = 1'-0"



**MECHANICAL PLAN - ROOM A505**

SCALE: 1/4" = 1'-0"



**MECHANICAL GENERAL NOTES:**

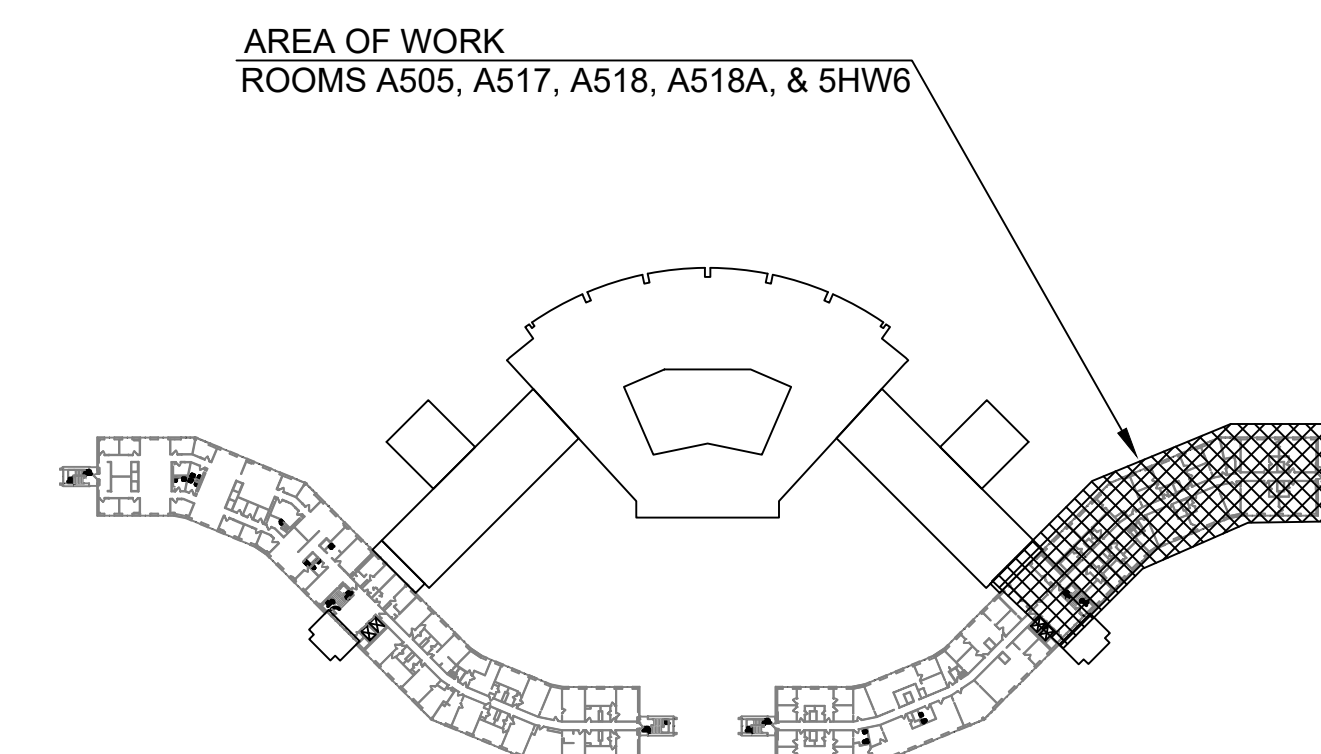
1. ALL WORKMANSHIP AND MATERIALS TO FOLLOW MSU STANDARDS OF CONSTRUCTION.

**# MECHANICAL DEMOLITION PLAN NOTES:**

1. DEMO EXISTING SINK AND ASSOCIATED PLUMBING. CAP PLUMBING LINES AND SANITARY BELOW FLOOR, IN ROOM BELOW.
2. DISCONNECT EXISTING PLUMBING AND SANITARY LINES AND PREP FOR CONNECTION TO NEW SINK.
3. DEMO EXISTING GAS LINES AND CAP BELOW FLOOR, IN ROOM BELOW, AS CLOSE TO SHUT-OFF AS POSSIBLE.
4. DEMO SAFETY SHOWER IN HALLWAY AND CAP PLUMBING AT WALL / CEILING.
5. DEMO EXISTING LINEAR DIFFUSERS.
6. DEMO EXISTING DUCTWORK BACK TO LOCATION SHOWN.
7. DEMO EXISTING THERMOSTAT AND SAVE FOR RELOCATION. TEMPORARILY CAP PNEUMATIC TUBING AND PREP FOR RELOCATION OF EXISTING THERMOSTAT.
8. DEMO ANY MECHANICAL ITEMS ASSOCIATED WITH EXISTING COLD ROOM AND CAP OUTSIDE THE SPACE.
9. DEMO SMALL EQUIPMENT LINE WITH SHUT OFF AND CAP INSIDE ADJACENT ROOM.

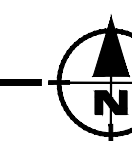
**# MECHANICAL PLAN NOTES:**

1. INSTALL NEW SINK AND FAUCET AND RECONNECT TO EXISTING PLUMBING AND SANITARY LINES. SINK: STAINLESS STEEL UNDERMOUNT SINK, KOHLER ELKAY MODEL HDU21158 OR EQUIVALENT. FAUCET: KOHLER FORTE, K-10433-VS. SINGLE HOLE. PULL-OUT SPRAY HEAD.
2. PROVIDE FILTERED CW FAUCET AT SINK FOR DRINKING WATER. FAUCET: KOHLER, WELLSRING, MODEL K-6666-AG-VS. AQUA PURE, AP101T, OR EQUIVALENT.
3. CONNECT EXISTING DUCTWORK TO NEW SUPPLY DIFFUSERS. CD-1: PRICE SCD OR EQUIVALENT. CD-2: PRICE RCD OR EQUIVALENT.
4. RELOCATE EXISTING THERMOSTAT TO LOCATION SHOWN AND RECONNECT TO EXISTING PNEUMATIC CONTROL PIPING.
5. INSTALL NEW, LINED, TRANSFER AIR BOOTS.
6. INSTALL NEW RETURN AIR GRILLES. PRICE MODEL 80, INCLUDING PRICE RAC CANOPY, OR EQUIVALENT.



**FEE BUILDING KEY PLAN**

FOR REFERENCE ONLY



MSU PROJ. NO.  
CP23087

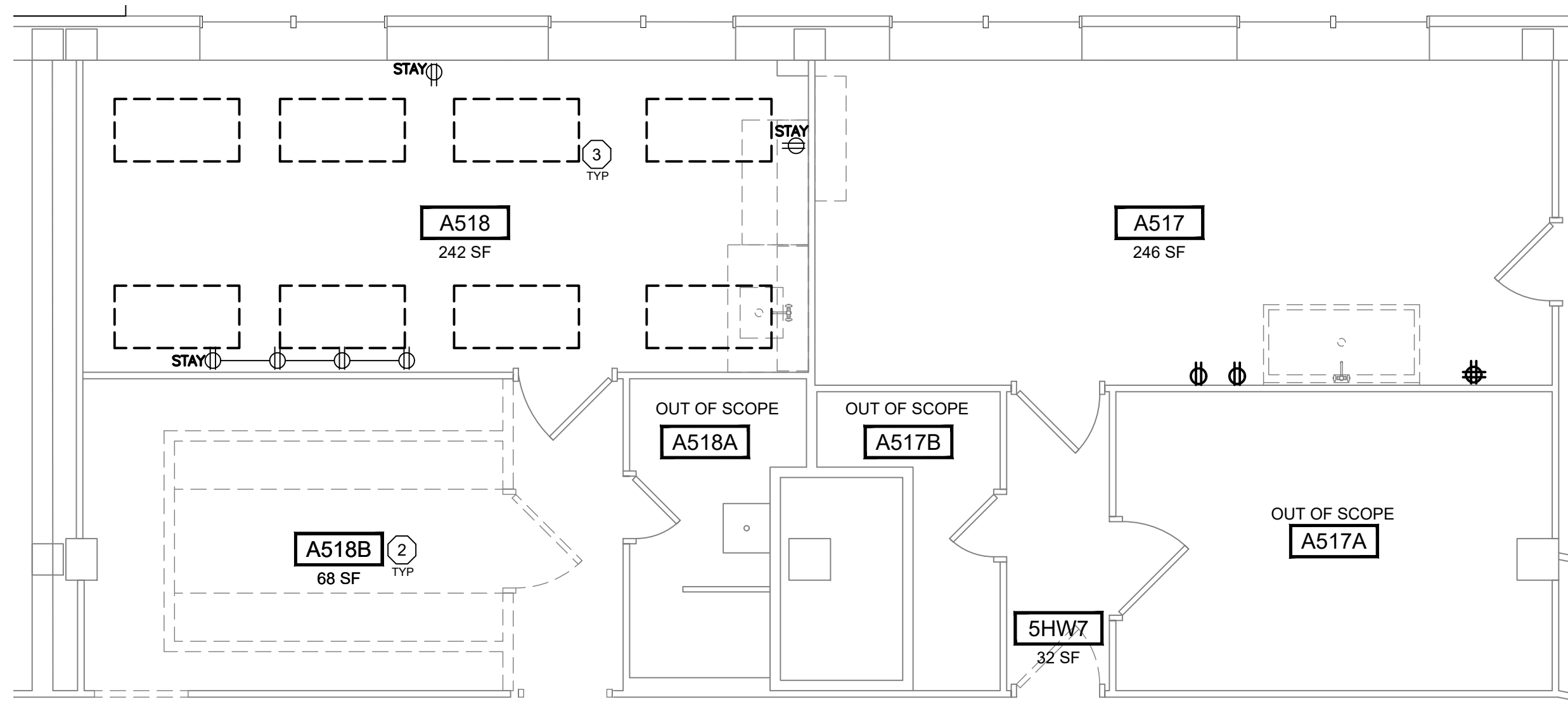
PR. MGR. CHARLAND  
 ARCH. CHARLAND  
 MECH. GOERGE  
 ELEC. HOWARD  
 CIVIL

L.A.  
 INT. DES. WHITBECK  
 CONST. REP. CHARLAND  
 APPR. MULLEN  
 DATE 11/21/2023  
 SCALE AS NOTED  
 ISSUED

RELEASED FOR BID

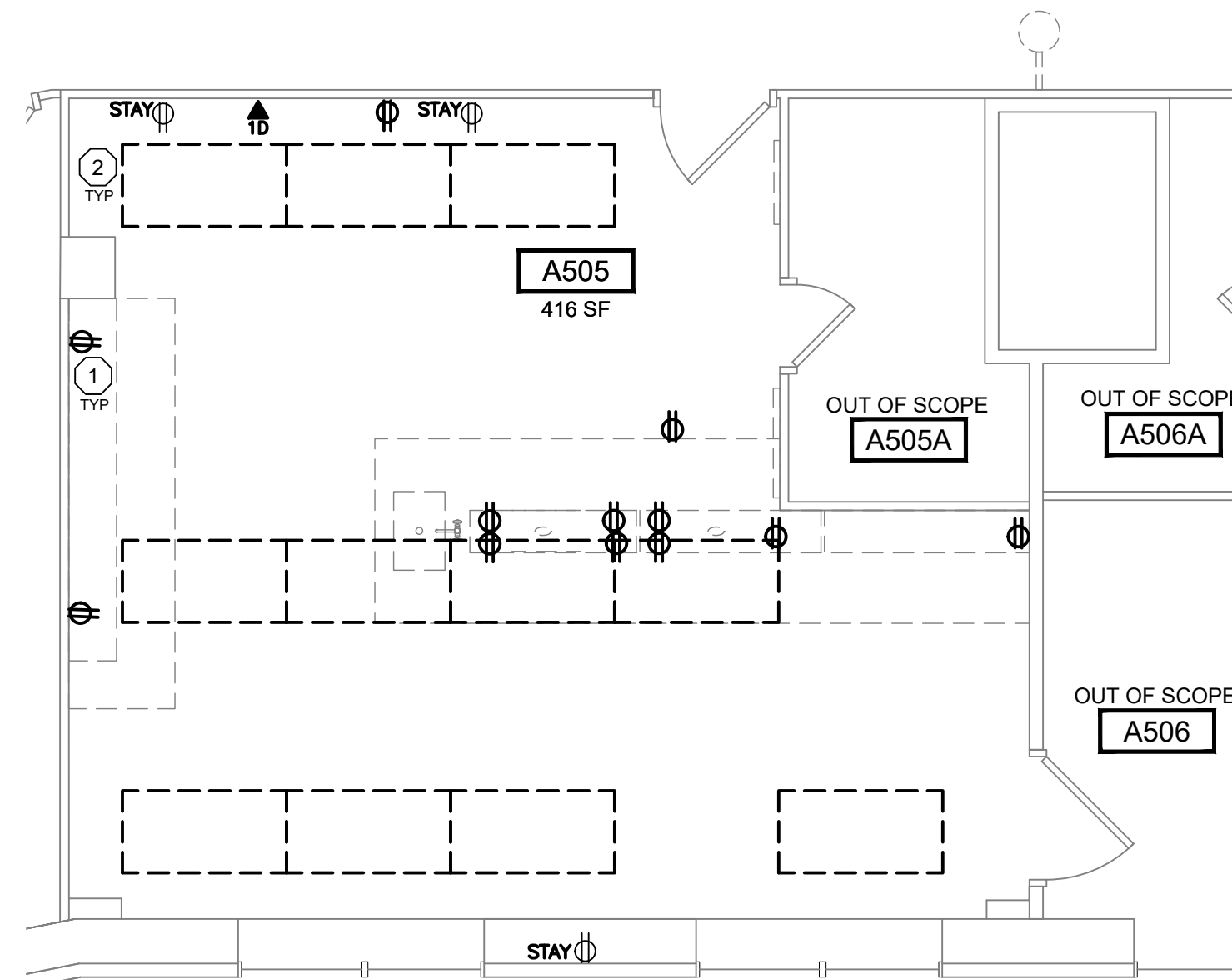
MECHANICAL PLANS

**M-1**



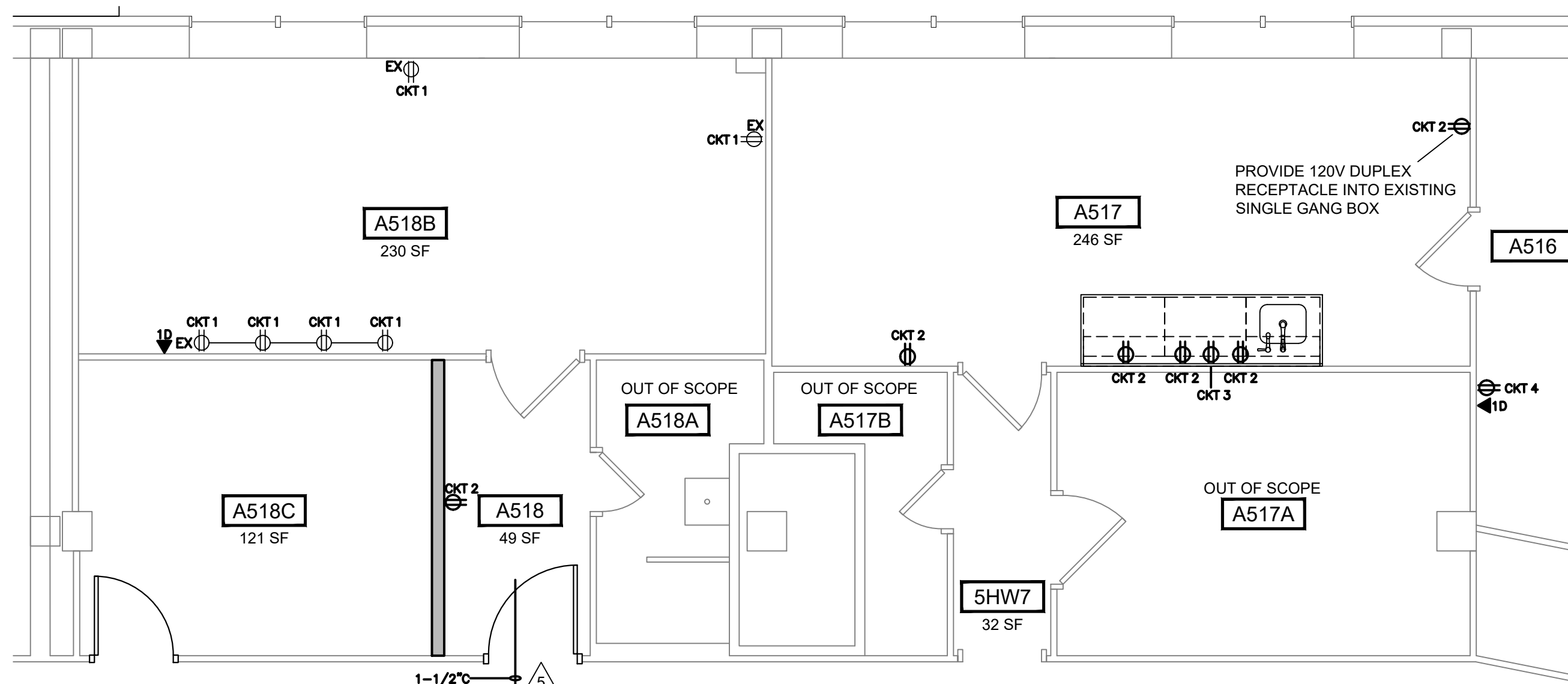
**ELECTRICAL DEMOLITION PLAN - ROOMS A517, A518, & A518A**

SCALE: 1/4" = 1'-0"



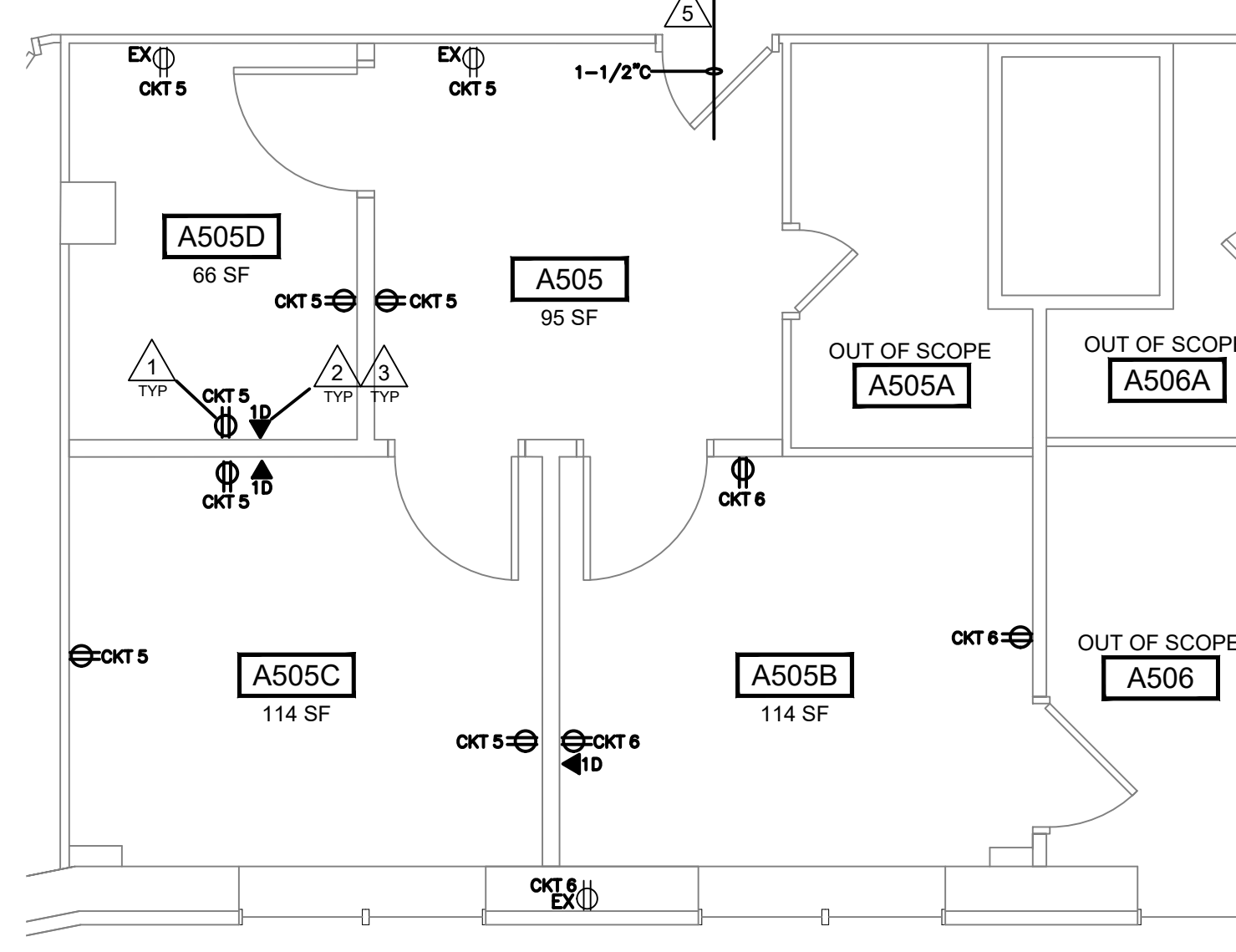
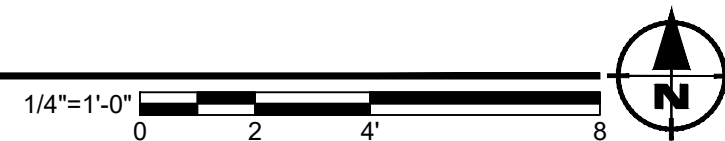
**ELECTRICAL DEMOLITION PLAN - ROOM A505**

SCALE: 1/4" = 1'-0"



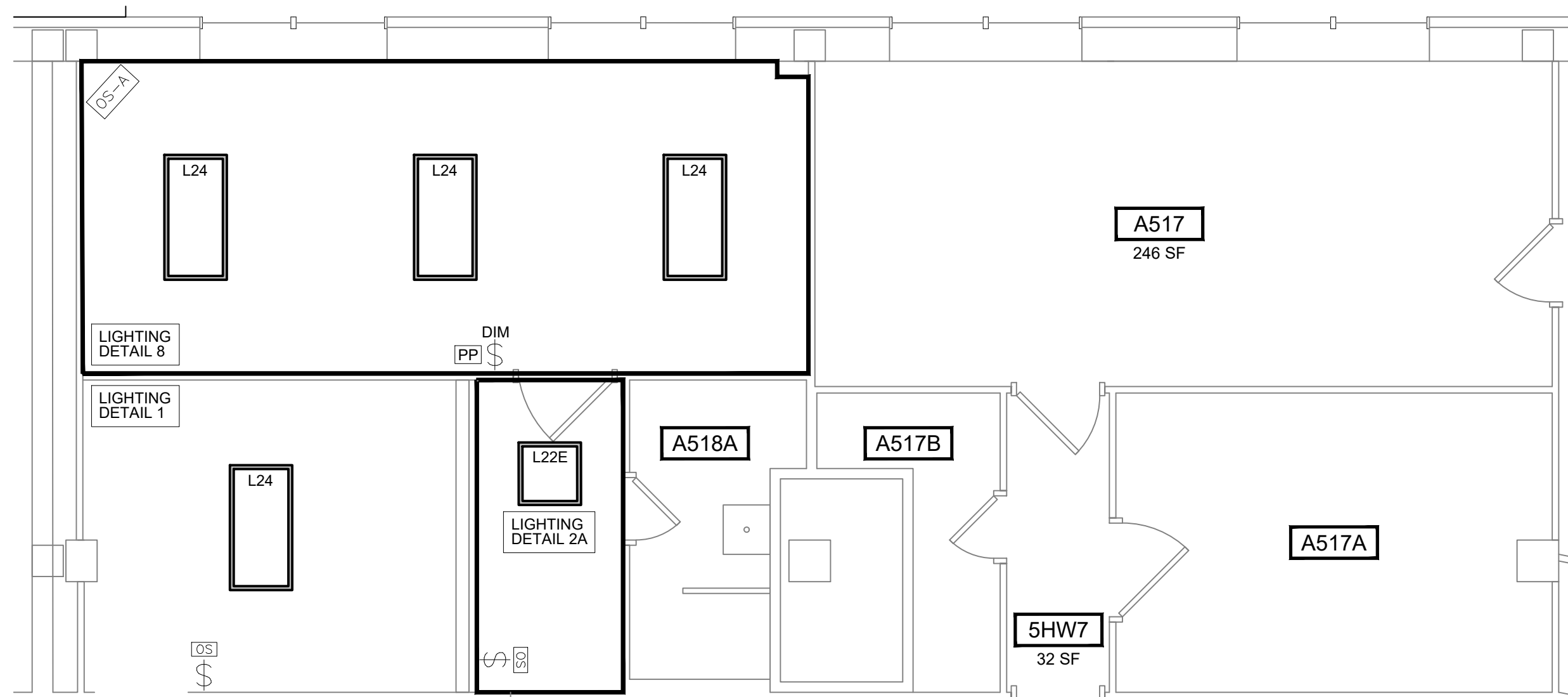
**ELECTRICAL PLAN - ROOMS A517, A518, & A518A**

SCALE: 1/4" = 1'-0"



**ELECTRICAL PLAN - ROOM A505**

SCALE: 1/4" = 1'-0"



**LIGHTING PLAN - ROOMS A517, A518, & A518A**

SCALE: 1/4" = 1'-0"



**LIGHTING PLAN - ROOM A505**

SCALE: 1/4" = 1'-0"



120/208V CIRCUIT SCHEDULE					
CKT	DESCRIPTION	LOAD	PANEL	CB	COMMENT
1	RM A518B RECEPTS	1080 VA			USE EXIST ROOM CKT
2	RMS A517, A518 RECEPTS	1080 VA			USE EXIST ROOM CKT
3	RM A517 MICROWAVE RECEPTS	1000 VA			USE EXIST ROOM CKT
4	RM A516 LCD TV RECEPT	500 VA			USE EXIST ROOM CKT
5	RMS A505, A505C N WALL RECEPTS	1080 VA			USE EXIST ROOM CKT
6	RMS A505C W & E WALL, A505B RECEPTS	1080 VA			USE EXIST ROOM CKT

NOTES:  
1. CIRCUITING IS BASED ON (6) 120V EXISTING CIRCUITS TO BE RE-USED.  
USE SPARE CIRCUITS FROM NEAREST PANELBOARD IF NEEDED.

277V LIGHTING CIRCUIT SCHEDULE				
CKT	DESCRIPTION	WATTS	PANEL	CB
1	LIGHTING - RMS A505 (2)37W+A505B (2)38W+A505C (2)38W+A505D (2)37W	300W		
2	LIGHTING - RMS A518 (1)37W+A518B (3)38W+A518C (1)38W	189W		

NOTES:  
1. RE-USE EXISTING 277V ROOM LIGHTING CIRCUITS.

LIGHTING CONTROLS SEQUENCE OF OPERATION	
ROOM A518B	1. MSU LIGHTING DETAIL 1 - MANUAL ON/AUTO OFF WITH NO DIMMING.
ROOM A505, 518C	1. MSU LIGHTING DETAL 2A - AUTO ON/AUTO OFF OPERATION WITH NO DIMMING.
ROOMS A505B, A505C, A505D	1. MSU LIGHTING DETAIL 3A - MANUAL ON/AUTO OFF OFF OPERATION WITH DIMMING.
ROOMS A518	1. MSU LIGHTING DETAIL 8 - MANUAL ON/AUTO OFF OFF OPERATION WITH DIMMING.

LIGHTING FIXTURE SCHEDULE	
L22:	LED FLAT PANEL: LITHONIA EPANL-2X2-3400LM-80CRI-4000K-MIN10-ZT-MVOLT OR MSU EQUAL. GRID MOUNT 2'X2' LED, 3400 LUMEN, 4000K, 80CRI, 0-10V DIM, 37W, WHITE.
L22E:	LED FLAT PANEL: LITHONIA EPANL-2X2-3400LM-80CRI-4000K-MIN10-ZT-MVOLT-EWCP OR MSU EQUAL. GRID MOUNT 2'X2' LED, 3400 LUMEN, 4000K, 80 CRI, 0-10V DIM, 37W, WHITE. SAME AS F1 WITH 10W EMG BATTERY BACK & SELF DIAG WITH AND INTEGRAL TEST SWITCH.
L24	LED FLAT PANEL: LITHONIA EPANL-2X4-4000LM-80CRI-4000K-MIN10-ZT-MVOLT, OR MSU EQUAL. GRID MOUNT 2'X4' LED, 4000 LUMEN, 4000K, 80 CRI, 0-10V DIM, 38W, WHITE.

- # ELECTRICAL DEMOLITION PLAN NOTES:**
1. REMOVE RECEPTACLES AND CONDUIT/WIRING BACK TO SOURCE UNLESS NOTED OTHERWISE.
  2. REMOVE ALL ELECTRICAL AND CONTROLS OF COLD ROOM BACK TO SOURCE.
  3. REMOVE LIGHTING FIXTURES AND SWITCHING. ROOM LIGHTING CIRCUITS TO BE RE-USED.

- # ELECTRICAL/LIGHTING PLAN NOTES:**
1. PROVIDE NEW POWER RECEPTACLES AT LOCATIONS SHOWN. REWORK AND RE-CIRCUIT EXISTING RECEPTACLES AS NOTED ON THE PLANS AND CIRCUIT SCHEDULE. COORDINATE CASEWORK RECEPTACLE LOCATIONS WITH ARCHITECTURAL/FURNITURE SUPPLIER. LOAD SUMMARY: THE NEW ELECTRICAL LOAD FOR THIS LAB AREA IS APPROX THE SAME AS BEFORE.
  2. PROVIDE EXTRA DEEP SINGLE GANG BOX WITH 3/4" CONDUIT TO LOCATION ABOVE LAY-IN CEILING.
  3. BY MSU I.T. SERVICES: PROVIDE DATA CABLING, TERMINATIONS, DATA JACKS AND FACEPLATES.
  4. PROVIDE J-HOOKS SPACED AT 36" ABOVE THE LAY-IN CEILING AROUND THE PERIMETER OF THE ROOM FOR THE OCCUPANCY SENSOR AND DATA CABLING PIN: DOC INDUSTRIES JH-32 OR EQUAL.
  5. PROVIDE 1-1/2" CONDUIT WITH BUSHINGS FROM EXISTING CABLE TRAY IN CORRIDOR CEILING TO LOCATION ABOVE NEW CEILING GRID FOR DATA CABLING. DATA EQMT LOCATED IN ROOM A527.
  6. PROVIDE LIGHTING FIXTURES, LIGHTING CONTROLS AND WALLBOX OCCUPANCY SENSOR/SWITCH. SEE LIGHTING FIXTURE SCHEDULE AND DETAILS. RE-USE EXISTING ROOM LIGHTING CIRCUIT. SET THE OCCUP SENSORS & WALLBOX OS/SWITCH SETTINGS AS SHOWN ON THE LIGHTING DETAILS.

- ELECTRICAL GENERAL NOTES:**
1. RETURN ALL ELECTRICAL EQUIPMENT TO MSU SURPLUS AFTER DEMOLITION.
  2. PROVIDE SEPARATE NEUTRAL FOR EACH NEW CIRCUIT. SHARED NEUTRALS NOT ALLOWED.
  3. EXISTING RECEPTACLES TO BE RE-USED ARE INDICATED AS "STAY" ON THE DEMO PLANS AND "EX" ON THE NEW PLANS. SEE CIRCUIT SCHEDULE FOR NEW CIRCUITING.
  4. UPDATE THE PANELBOARD CIRCUIT DIRECTORY AND CIRCUIT SCHEDULE WITH FINAL CIRCUITS.

MSU PROJ. NO.	CP23087
PR. MGR.	CHARLAND
ARCH.	CHARLAND
MECH.	GEORGE
ELEC.	HOWARD
CIVIL	
L.A.	
INT. DES.	WHITBECK
CONST. REP.	CHARLAND
APPR.	MULLEN
DATE	11/21/2023
SCALE	AS NOTED
ISSUED	
RELEASED FOR BID	

MSU PROJ. NO.	CP23087
PR. MGR.	CHARLAND
ARCH.	CHARLAND
MECH.	GOERGE
ELEC.	HOWARD
CIVIL	
L.A.	WHITBECK
INT. DES.	CHARLAND
CONST. REP.	CHARLAND
APPR.	MULLEN
DATE	11/21/2023
SCALE	AS NOTED
ISSUED	
RELEASED FOR BID	

120-277V LIGHTING CIRCUIT

WALLBOX OS

RED LIGHTING FIXTURES

WHT

BLK

L2

NOTES:

- CONTROL IS MANUAL ON/AUTO OFF
- SET DIP SWITCHES AS SHOWN. ALL OTHER SETTINGS ARE DEFAULT.

LUTRON MSA102-WH

- SET TIMEOUT TO 30 MINS.

LEGRAND DW-100-W

- SET SW 1,2 TO 30 MINS.
- SET SW 5,6 SET TO OPTION A.
- SET SW 7 TO DISABLE AUDIBLE ALERT.
- SET SW 8 TO AUTO ON/AUTO OFF.

SEE SPECIFICATION SECTION 260923 LIGHTING CONTROL DEVICES

MICHIGAN STATE UNIVERSITY	Infrastructure Planning and Facilities	DATE: 6/16/09	DETAIL NO.: 260923-1	SHEET: 1 OF ONE
WALLBOX OCCUPANCY SENSOR COPY/SUPPLY ROOM TYPICAL DETAIL		DATE: 07/06/2023	REVISION: MSU	

120-277V LIGHTING CIRCUIT

WALLBOX OS

RED NORMAL POWER/EMG LIGHTING FIXTURES

WHT

BLK EMG LIGHTING 120/277V SENSE

L2

NOTES:

- CONTROL IS AUTO ON/AUTO OFF.
- PROVIDE EMERGENCY BATTERY PACK
- SET DIP SWITCHES AS SHOWN. ALL OTHER SETTINGS ARE DEFAULT.

LUTRON MSA102-WH

- SET TIMEOUT TO 30 MINS.

LEGRAND DW-100-W

- SET SW 1,2 TO 30 MINS.
- SET SW 5,6 SET TO OPTION A.
- SET SW 7 TO DISABLE AUDIBLE ALERT.
- SET SW 8 TO AUTO ON/AUTO OFF.

SEE SPECIFICATION SECTION 260923 LIGHTING CONTROL DEVICES

MICHIGAN STATE UNIVERSITY	Infrastructure Planning and Facilities	DATE: 6/16/09	DETAIL NO.: 260923-2A	SHEET: 1 OF ONE
WALLBOX OCCUPANCY SENSOR I.T. CLOSET/SMALL RESTROOM TYPICAL DETAIL		DATE: 07/06/2023	REVISION: MSU	

120-277V LIGHTING CIRCUIT

WALLBOX OS

VIO + 0-10V DIMMING

GRY -

BLK\* LIGHTING FIXTURES

WHT

18GA

\*LEGRAND=RED

NOTES:

- CONTROL IS MANUAL ON/AUTO OFF WITH DIMMING.

LUTRON MS-Z101-W

- SET TO 30 MINS.
- SET TO VACANCY MODE.

LEGRAND DW-311-W

- SET SW 2,3 TO 30 MINS.
- SET SW 4,5 TO OPTION A.
- SET SW 6,7,8,9 TO DISABLE AUDIBLE ALERT.
- ALL OTHER SETTINGS ARE DEFAULT.

SEE SPECIFICATION SECTION 260923 LIGHTING CONTROL DEVICES

MICHIGAN STATE UNIVERSITY	Infrastructure Planning and Facilities	DATE: 6/16/09	DETAIL NO.: 260923-3A	SHEET: 1 OF ONE
WALLBOX OCCUPANCY SENSOR SMALL OFFICE TYPICAL DETAIL		DATE: 06/23/2022	REVISION: MSU	

120-277V LIGHTING CIRCUIT

WALLBOX OS

RED BLU BLK WHT

BLU AUTO ON BLU/WHT-MAN ON

RED +24V BLK COM

ORG/YEL-MAN SW

18GA

16GA

24V MANUAL SWITCH

LEVITON OPP20-OD2 POWER PACK

LEVITON IP710-DL-W

OCCUPANCY +24V COM

LEVITON OSW/OOSC

ADDNL OCCUP SENSORS

NORMAL POWER LIGHTING FIXTURES

0-10V DIMMING

NOTES:

- CONTROL IS MANUAL ON/AUTO OFF WITH DIMMING.
- FOR NEW CONSTRUCTION PROVIDE EXTRA DEEP SINGLE GANG BOX.
- SET DIP SWITCHES AS SHOWN. ALL OTHER SETTINGS ARE DEFAULT.

OCCUPANCY SENSOR/POWER PACK:

P/N: LEVITON OSW12-M0W WALL/CORNER MOUNT (OS-A), OSC20-M0W CEILING MOUNT (OS-B) & OPP20-OD2 POWER PACK.

- CHANGE TIME DELAY TO 20 MINUTES.
- SET DIP SW A3 ON TO DISABLE AUTO-ADAPTING.
- SET DIP SW A4 ON TO DISABLE WALK THRU.
- (4) OCCUP SENSOR MAX FOR EACH POWER PACK. PROVIDE 2ND POWER PACK WITH THE +24VDC AND COM WIRED IN PARALLEL FOR UP TO (8) OCCUP SENSORS.
- CAP UNUSED POWER PACK LEADS.

COMMISSIONING NOTES:

- USE THE FOLLOWING PROCEDURE FOR CHECKOUT. VERIFY WITH THE LATEST MFG LITERATURE.
- TURN DIP SWITCH B3 ON AND THEN OFF TO INITIATE THE TEST MODE. THE OCCUPANCY SENSOR WILL BE IN TEST MODE WITH A 6 SECOND TIMEOUT FOR 15 MINUTES. THE UNIT WILL GO BACK TO AUTO MODE AFTER 15 MINUTES.
- LEAVE THE ROOM AND CLOSE THE DOOR. WAIT 10 SECONDS AND VERIFY THE LIGHTING IS OFF.
- ENTER THE ROOM. TURN ON THE LIGHT SWITCH, AND VERIFY THE LIGHTING TURNS ON.
- WALK AROUND THE PERIMETER OF ROOM FOR APPROX. 60 SEC. TO VERIFY THE LIGHTING STAYS ON.
- INITIAL SETTINGS OF 50% INFRARED AND 75% ULTRASONIC. ADJUST THE INFRARED SETTING HIGHER IF OCCUPANCY IS NOT DETECTED WHEN WALKING INTO THE ROOM. ADJUST THE ULTRASONIC HIGHER IF THE LIGHTING IS NOT STAYING ON WHEN WALKING AROUND THE PERIMETER IF THE ROOM.
- OCCUPANCY SENSOR RED LIGHT = INFRARED DETECTION & GREEN LIGHT = ULTRASONIC DETECTION.

SEE SPECIFICATION SECTION 260923 LIGHTING CONTROL DEVICES

MICHIGAN STATE UNIVERSITY	Infrastructure Planning and Facilities	DATE: 6/16/2008	DETAIL NO.: 260923-8	SHEET: 1 OF ONE
CEILING OCCUPANCY SENSORS - 1 ZONE LARGE OFFICE/MEETING ROOM TYPICAL DETAIL		DATE: 07/06/2023	REVISION: MSU	