

**# ARCHITECTURAL DEMOLITION PLAN NOTES:**

**GENERAL DEMOLITION NOTES:**

FOLLOWING DEMOLITION OF WALLS AND CEILINGS; VERIFY LAYOUT DIMENSIONS AND COORDINATE ANY NECESSARY REVISIONS TO LAYOUT WITH ARCHITECT.  
 MAINTAIN ALL PATHS OF EGRESS DURING CONSTRUCTION.  
 PROTECT ALL EXISTING ADJACENT FLOORING AND FINISHES DURING CONSTRUCTION  
 DEMOLITION WORK IS NOT LIMITED TO ITEMS SHOWN ON DEMOLITION PLANS. INTENT IS TO REMOVE ALL EXISTING MECHANICAL, ELECTRICAL, AND ARCHITECTURAL ITEMS AS REQUIRED TO FACILITATE NEW CONSTRUCTION. SEE ALSO M&E DEMOLITION SHEETS.

REMOVE ALL ANCHORS IN EXISTING WALLS TO REMAIN THROUGHOUT RENOVATED SPACE AND PATCH TO MATCH EXISTING. CLEAN AND PREPARE ALL EXISTING WALLS TO REMAIN IN THE WORK AREA FOR PAINT/ NEW FINISHES.  
 ORIGINAL BUILDING PLASTER WALLS CONTAIN ASBESTOS. ANY DEMOLITION, MODIFICATION OR DISTURBANCE OF ASBESTOS CONTAINING PLASTER MUST BE PERFORMED BY A LICENSED ABATEMENT CONTRACTOR.

ITEMS IDENTIFIED BY PROJECT MANAGER TO BE DELIVERED TO MSU SURPLUS: CONFIRM FIRST WITH BUILDING MANAGER THAT ITEMS ARE UNWANTED FOR DEPARTMENT USE. CONTACT SURPLUS TO CONFIRM ITEMS TO BE SALVAGED AND COORDINATE DELIVERY SCHEDULE PRIOR TO DELIVERY.

1. REMOVE DOOR AND FRAME
2. REMOVE MASONRY WALL AND ALL ASSOCIATED APPURTENANCES.
3. REMOVE FURNITURE WALL AND ALL ASSOCIATED APPURTENANCES.
4. REMOVE SYSTEMS FURNITURE DESKS, PARTITIONS, AND ALL ASSOCIATED APPURTENANCES.
5. REMOVE CEILING TILE AND GRID & ASSOCIATED APPURTENANCES TO EXTENTS OF LIMITS OF WORK, CLEAN PREP REMAINING WALLS TO RECEIVE NEW GRID.
6. SOME EXISTING CARPET TO REMAIN. (SEE FLOOR PLAN). PROTECT EXISTING CARPET IN AREAS WHERE CARPET IS TO REMAIN. AT LOCATIONS SCHEDULED TO RECEIVE NEW FLOORING REMOVE CARPET TILES AND SAVE FOR PATCHING/REUSE. PREP FLOOR FOR NEW WHERE SCHEDULED. REMOVE BASE TO EXTENTS OF LIMITS OF WORK
7. REMOVE & CLEAN ALL EXISTING STEEL WINDOW BLINDS SAVE FOR REINSTALLATION, TYP.
8. REMOVE SECTION OF CORRIDOR WALL FOR NEW OPENING, SEE ELEVATION.
9. NOT USED
10. REMOVE A/V CABINET.
11. REMOVE WALL CABINETS AND HARDWARE
12. REMOVE SECTION OF SILL OR LAMINATE TO REPLACE WITH NEW LAMINATED SILL TO MATCH EXISTING.
13. REMOVE ALUMINUM CLOSURE PANEL. PATCH, REPAIR REMAINING FRAME.

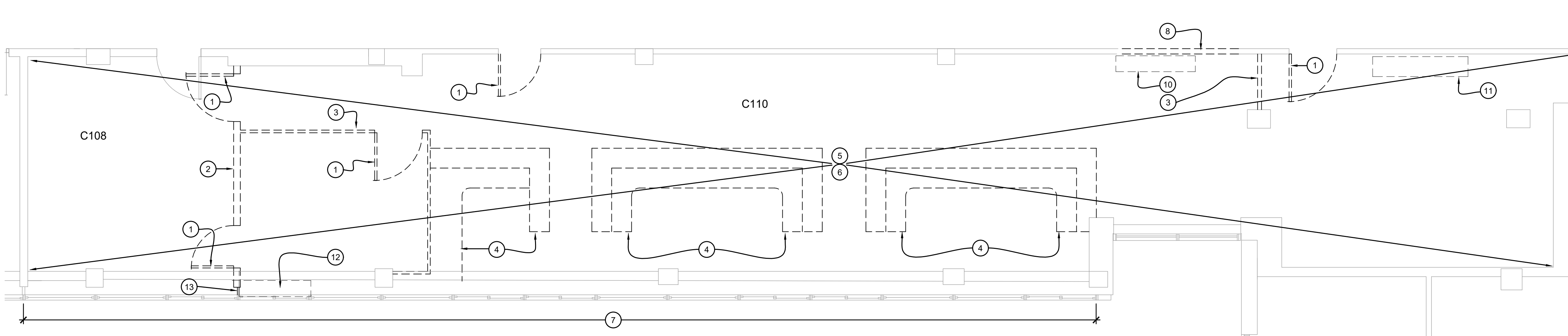
**ARCHITECTURAL GENERAL NOTES:**

PROVIDE SOLID NON-COM BLOCKING FOR ALL WALL MOUNTED CASEWORK, FURNISHINGS INCLUDING MARKER BOARDS, COAT HOOKS, DOOR STOPS AND OTHER WALL MOUNTED ITEMS.

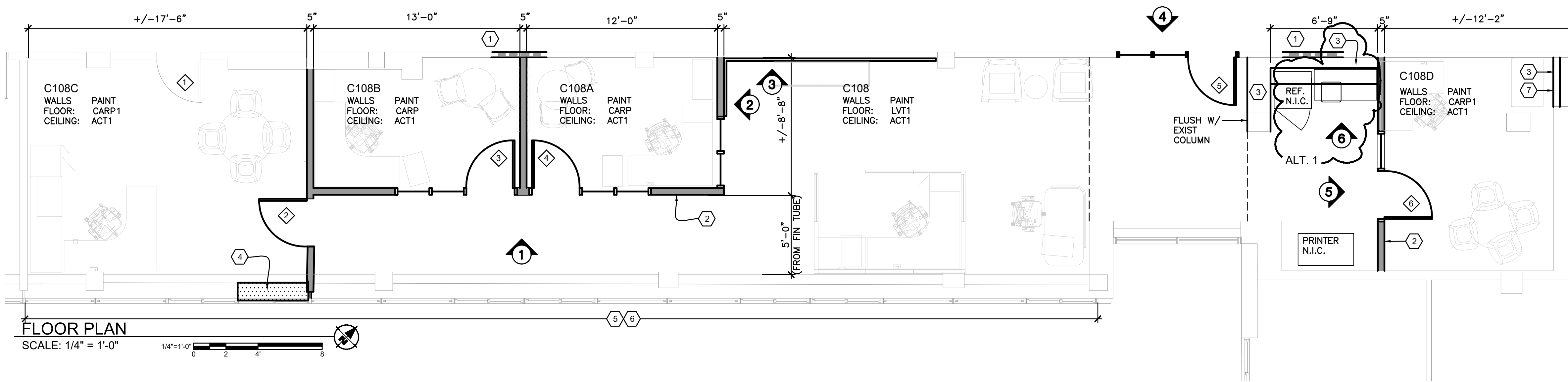
- ADD ALTERNATE NO. 1 = KITCHENETTE
- ADD ALTERNATE NO. 2 = EXTERIOR DOOR AND CONCRETE PAD.

**# ARCHITECTURAL PLAN NOTES:**

1. 1 HOUR WALL INFILL - THIN COAT PLASTER ON TYPE X GYP BOTH SIDES OF 3 5/8" METAL STUDS TO DECK ABOVE, SEAL TO DECK AND FIRESTOP ALL OPENINGS AND PENETRATIONS.
2. SOUND WALL - THIN COAT PLASTER ON GYP LATH RUN ONE SIDE TO ABOVE CEILING, RUN ONE SIDE DECK ABOVE AND SEAL TIGHT AROUND ALL OPENINGS, TYPICAL WHERE SHOWN.
3. CHASE, WALL, DEPTH AS REQUIRED THIN COAT PLASTER ON GYP LATH ONE SIDE MEDAL STUDS TO ABOVE CEILING.
4. REFINISH OR REBUILD SECTION OF WOOD SILL WITH PLASTIC LAMINATE TO MATCH EXISTING IN OFFICE.
5. CLEAN EXISTING WINDOWS AND FRAMES AT CONSTRUCTION COMPLETION.
6. REINSTALL EXISTING WINDOW BLINDS AFTER CLEANING, TYPICAL AT ALL WINDOWS.
7. INSTALL LOW 12" X 12" ACCESS PANEL TO MAINTAIN ACCESS TO EXISTING WATER COOLER CONNECTION.



**DEMO PLAN**  
 SCALE: 1/4" = 1'-0"

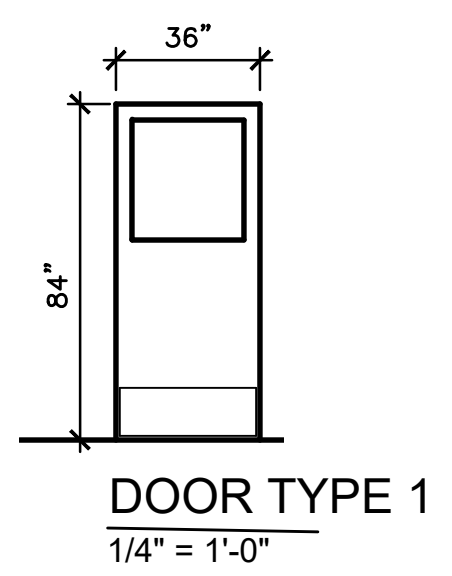


**FLOOR PLAN**  
 SCALE: 1/4" = 1'-0"

NO.	DIM	MATL	TYPE	FRAME	THROAT	SWING	HWDR SET	RATING	FINISH	NOTES
1	EXISTING	-	-	-	-	-	A	-	****	
2	3/0 X 7/0	WOOD	1	ALUM	-	LH	B	-	* ***	
3	3/0 X 7/0	WOOD	2	ALUM	-	RH	B	-	* ***	
4	3/0 X 7/0	WOOD	2	ALUM	-	LH	B	-	* ***	
5	3/0 X 7/0	STL	-	H.M.	4 7/8"	LH	D	45 MIN.	* **	
6	3/0 X 7/0	WOOD	2	ALUM	-	RH	C	-	***	

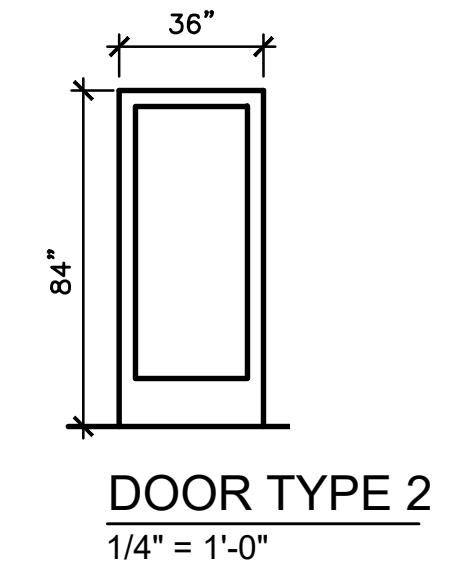
**DOOR SCHEDULE NOTES:**

- \* PROVIDE SOLID IN WALL BLOCKING FOR WALL STOPS.
- \*\* SEE ELEVATION
- \*\*\* WOOD VENEER SPECIES AND STAIN TO MATCH EXISTING SUITE DOORS.
- \*\*\*\* PROVIDE AND INSTALL FLOOR SWEEP AND WEATHERSTRIPPING FOR SOUND SEPARATION TO CORRIDOR.

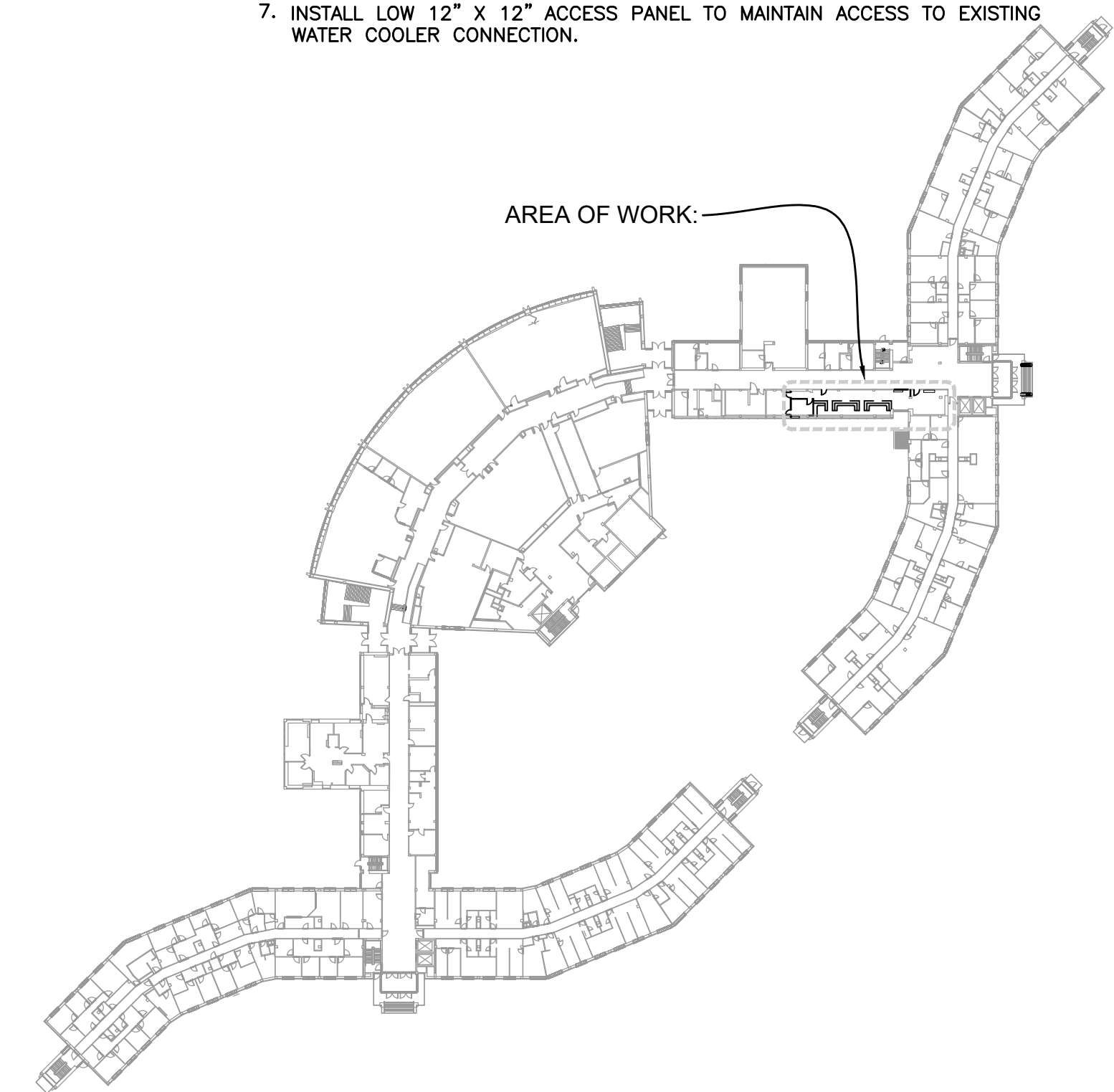


KEY	PRODUCT TYPE	MANUFACTURER	COLOR	STYLE/FINISH	SIZE
LVT1	LUXURY VINYL TILE	TANDUS CENTIVA	HONEY OAK	HERITAGE PLANK EHP	36"x6"
CPT1	CARPET*	*	*	*	*
LM1	LAMINATE	FORMICA	DOVER WHITE	ANTIMICROBIAL COLLECTION	
SS1	SOLID SURFACE	GORIAN	STONECREST SMOKE	-	
ST1	STAIN				
PT1	PAINT **	SHERWIN WILLIAMS	USEFUL GRAY	-	
PT2	PAINT **	SHERWIN WILLIAMS	PORPOISE	-	
WP1	WALL PANEL	WOOD VENEER HUB	OAK	ACOUSTIC SLAT WALL	
ACT1	CEILING TILE	USG***	WHITE	MARS*** TEGULAR	24"x24"

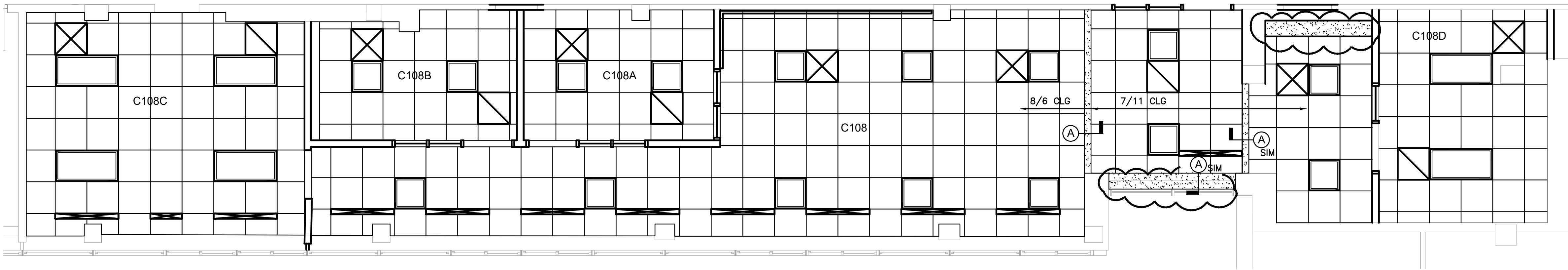
\* EXISTING CARPET REMAIN WHERE POSSIBLE, PATCHING REUSED EXISTING OR NEW TO MATCH AS REQUIRED.  
 \*\* LOCATIONS OF PT1 & PT2 PROVIDED BY INTERIOR DESIGNER  
 \*\*\* OR APPROVED EQUAL STYLE THAT MEETS MSU STANDARDS FOR CONSTRUCTION.



HARDWARE KEY	
SET A:	INSPECT DOOR, CLEAN AND LUBRICATE HINGES. REPLACE LATCH WITH NEW LEVER OFFICE LOCKSET.
SET B:	1 1/2 PR. HINGES, LEVER OFFICE LOCKSET, 10" X 34" KICKPLATE BOTH SIDES, WALL STOP.
SET C:	1 1/2 PR. HINGES, LEVER OFFICE LOCKSET, 10" X 34" KICKPLATE BOTH SIDES,
SET D:	1 1/2 PR. HINGES, LEVER OFFICE LOCKSET, 90° LIMIT CLOSER, 10" X 34" KICKPLATE BOTH SIDES, WALL STOP
ALL HARDWARE BRUSHED STAINLESS STEEL TO MATCH EXISTING STAIN AND SEAL ALL NEW WOOD DOORS ST1	

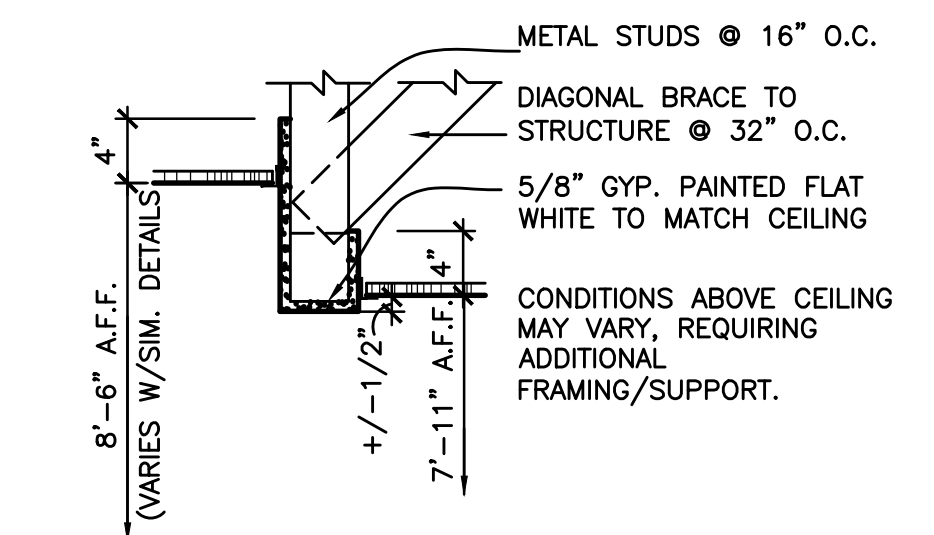


CAPITAL PROJ. NO. CP24012	
PR. MGR.	T.PACIFICO
ARCH.	J.KASDORF
MECH.	S.GOERGE
ELEC.	G.HALSEY
CIVIL	
L.A.	
INT. DES.	C.LOCKWOOD
CONST. REP.	T.PACIFICO
APPR.	DURKIN
DATE	8/8/24
SCALE	AS SHOWN
ISSUED	
FOR BID	



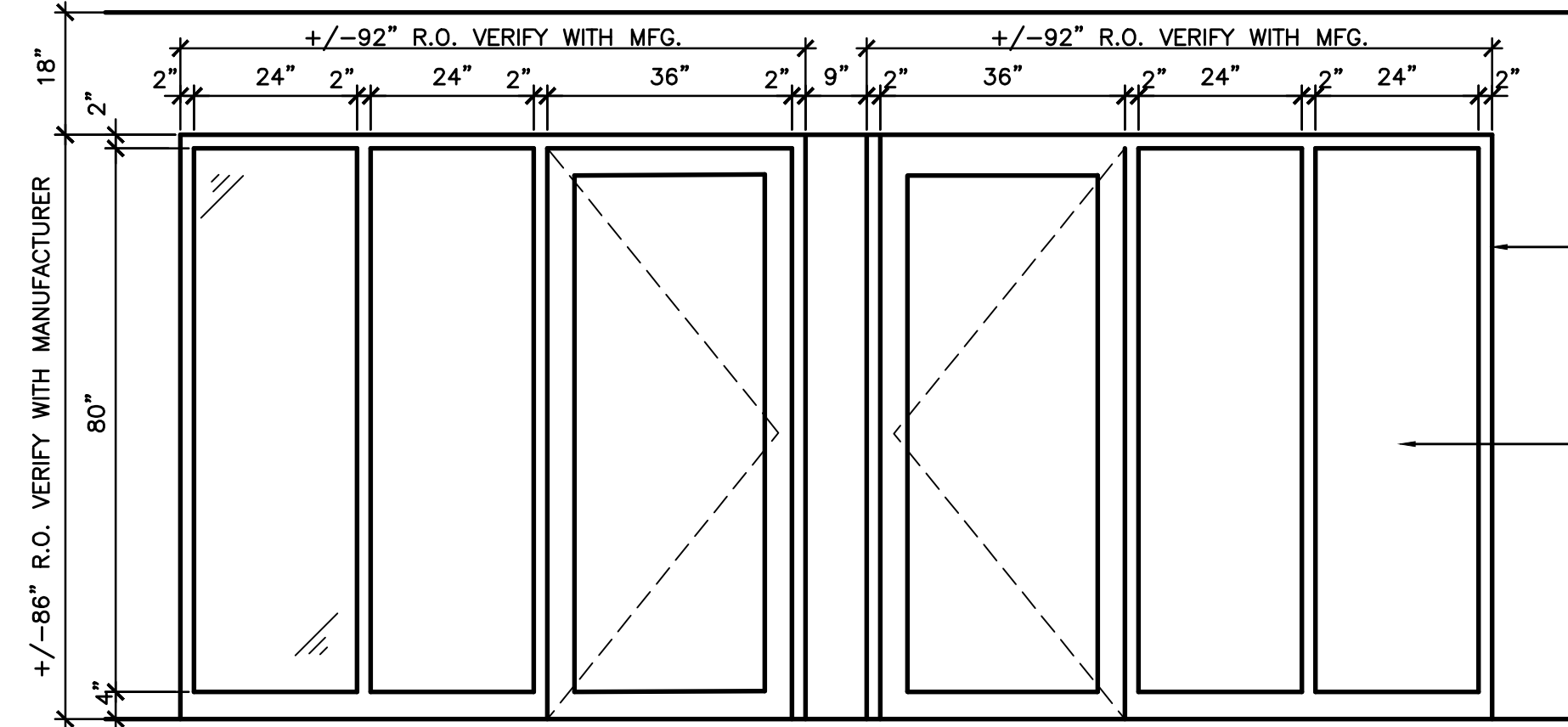
**REFLECTED CEILING KEY:**

- 2 X 2 TEGULAR ACOUSTICAL TILE AND GRID ACT1
- THIN COAT PLASTER ON GYPSUM LATH PAINTED WHITE TO MATCH CEILING, SATIN FINISH, NEW AND/OR PATCH TO EXISTING
- 2' x 4' FIXTURE, SEE ELECTRICAL
- 2' x 2' FIXTURE, SEE ELECTRICAL
- RECESSED LIGHT FIXTURE, SEE ELECTRICAL
- SUPPLY AIR DIFFUSER, SEE MECHANICAL
- SUPPLY AIR DIFFUSERS, SEE MECHANICAL
- RETURN AIR GRILLE, SEE MECHANICAL.



**REFLECTED CEILING PLAN**

SCALE: 1/4" = 1'-0"



ALUMINUM FRAME INTERIOR WINDOW SYSTEM: NXTWALL CLEAR ANODIZED WITH CLEAR TEMPERED GLASS AND SOLID CORE FULL LITE DOORS OR APPROVED EQUAL.

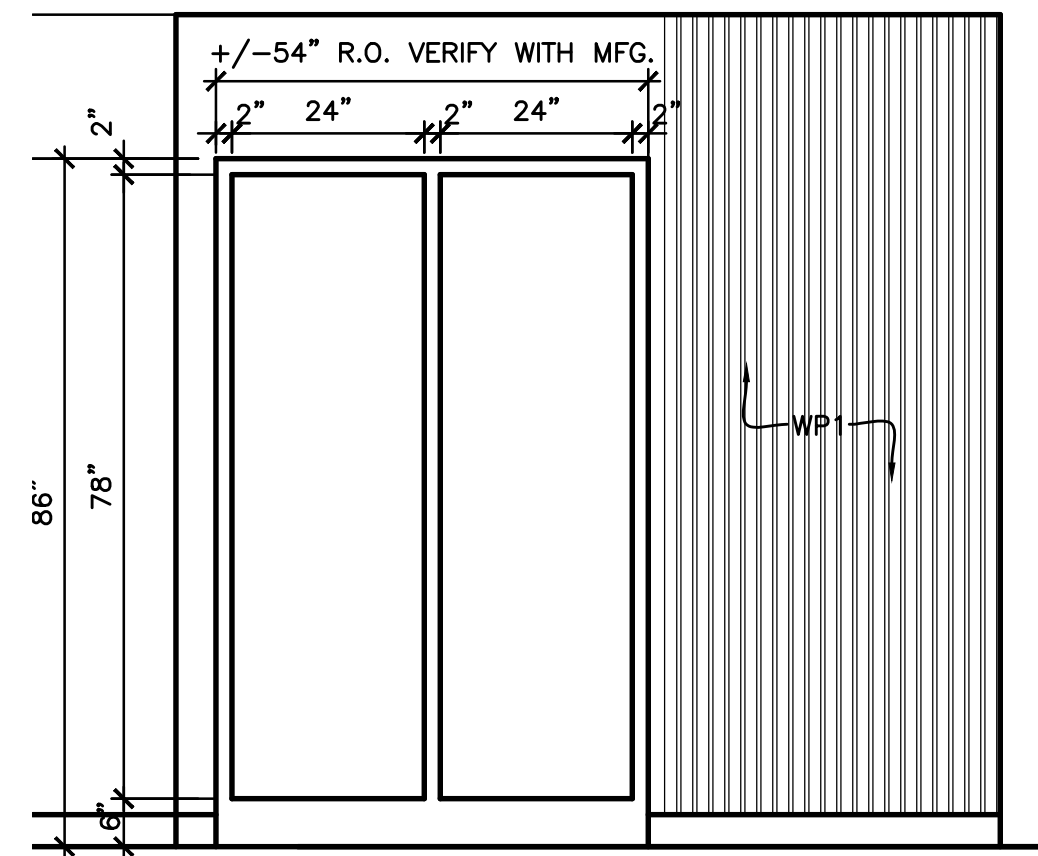
TYPICAL: AT GLASS WALLS AND DOORS APPLY PARTIAL HEIGHT FROSTED VINYL TO INSIDE FACE OF GLASS WHERE DIRECTED BY INTERIOR DESIGNER. HEIGHT AND LOCATIONS TO BE DETERMINED.

**INTERIOR ELEVATION**

SCALE: 1/2" = 1'-0"

TYPICAL: FRAME DIMENSIONS ARE NOMINAL R.O. PER MANUFACTURER'S RECOMMENDATIONS.

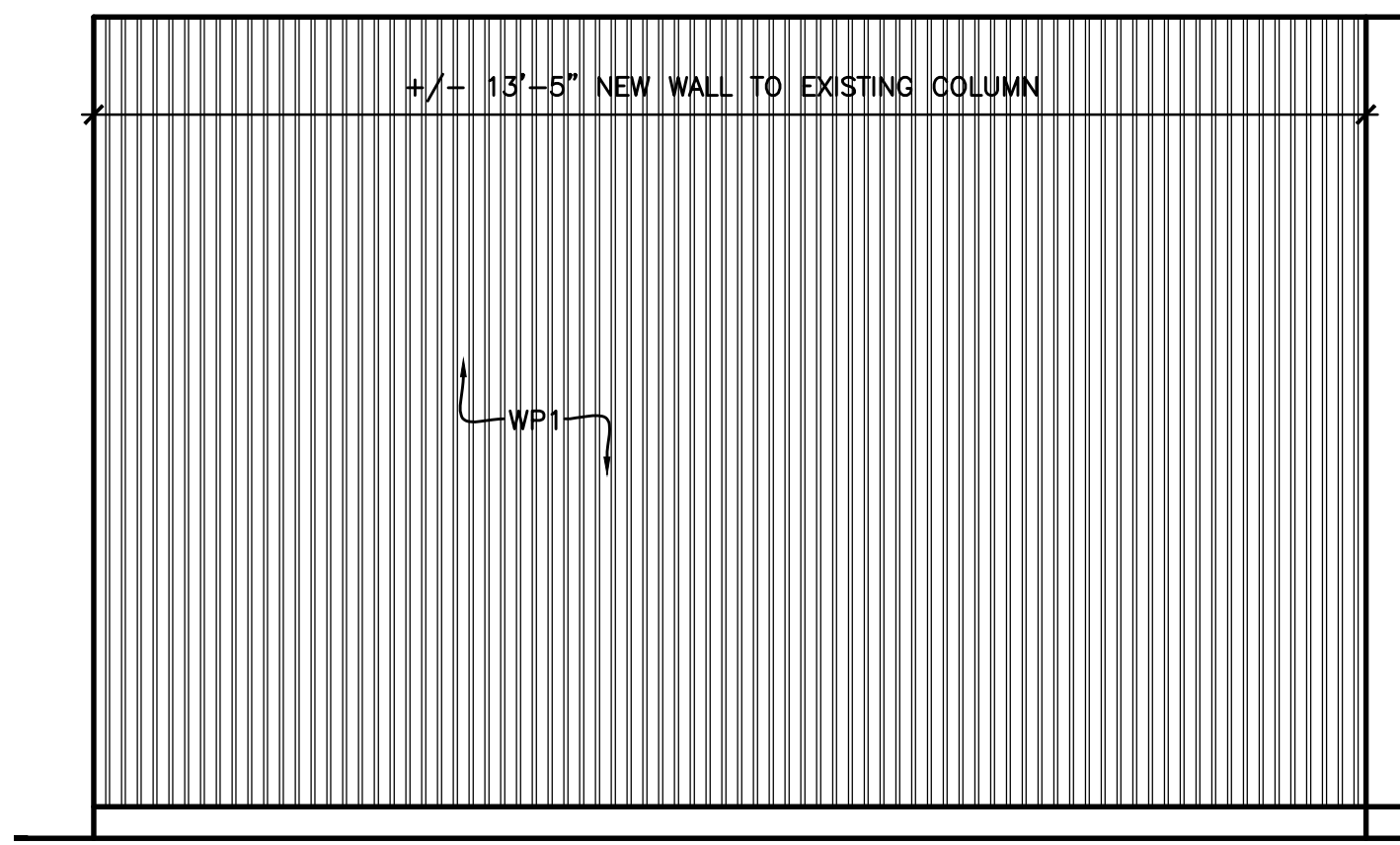
1



**INT. ELEVATION**

SCALE: 1/2" = 1'-0" SEE ELEVATION 1 FOR TYPICALS.

2



**INT. ELEVATION**

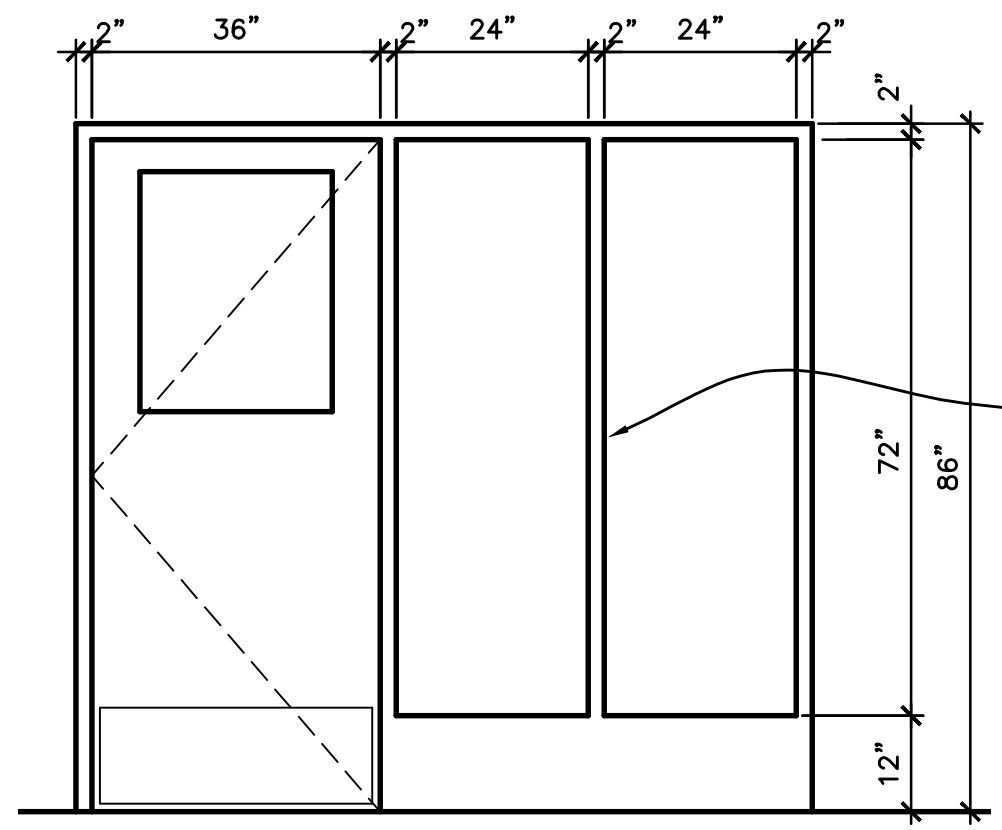
SCALE: 1/2" = 1'-0"

3

**CEILING BREAK DETAIL (A)**

SCALE: 1" = 1'-0"

A

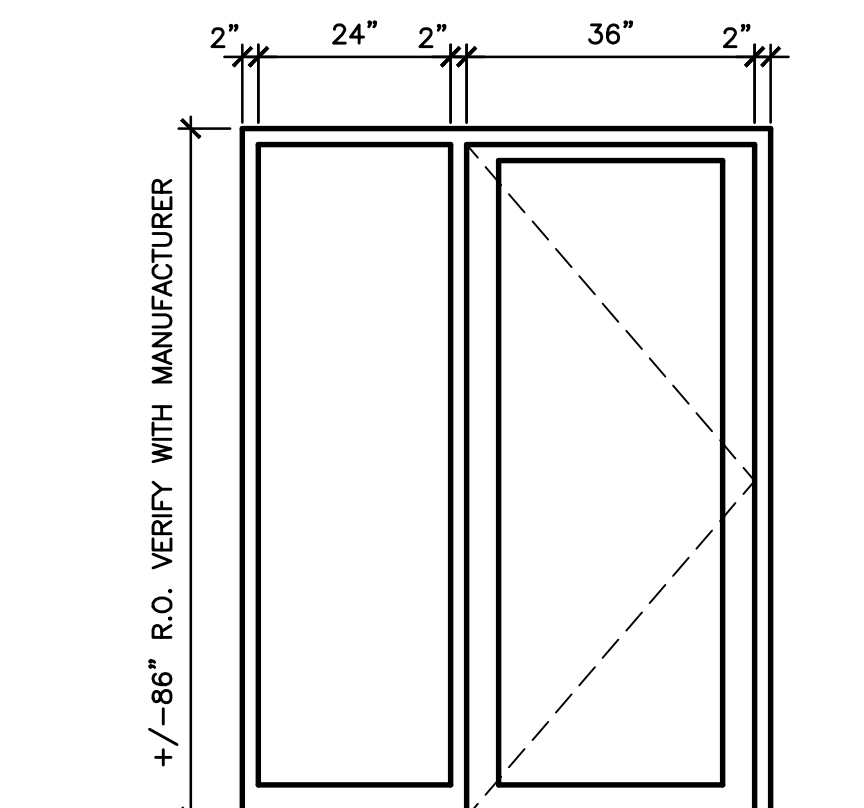


45 MINUTE RATED GLASS ASSEMBLY WINDOWS AND DOOR W/ HALF LITE

**INT. ELEVATION**

SCALE: 1/2" = 1'-0" SEE ELEVATION 1 FOR TYPICALS.

4

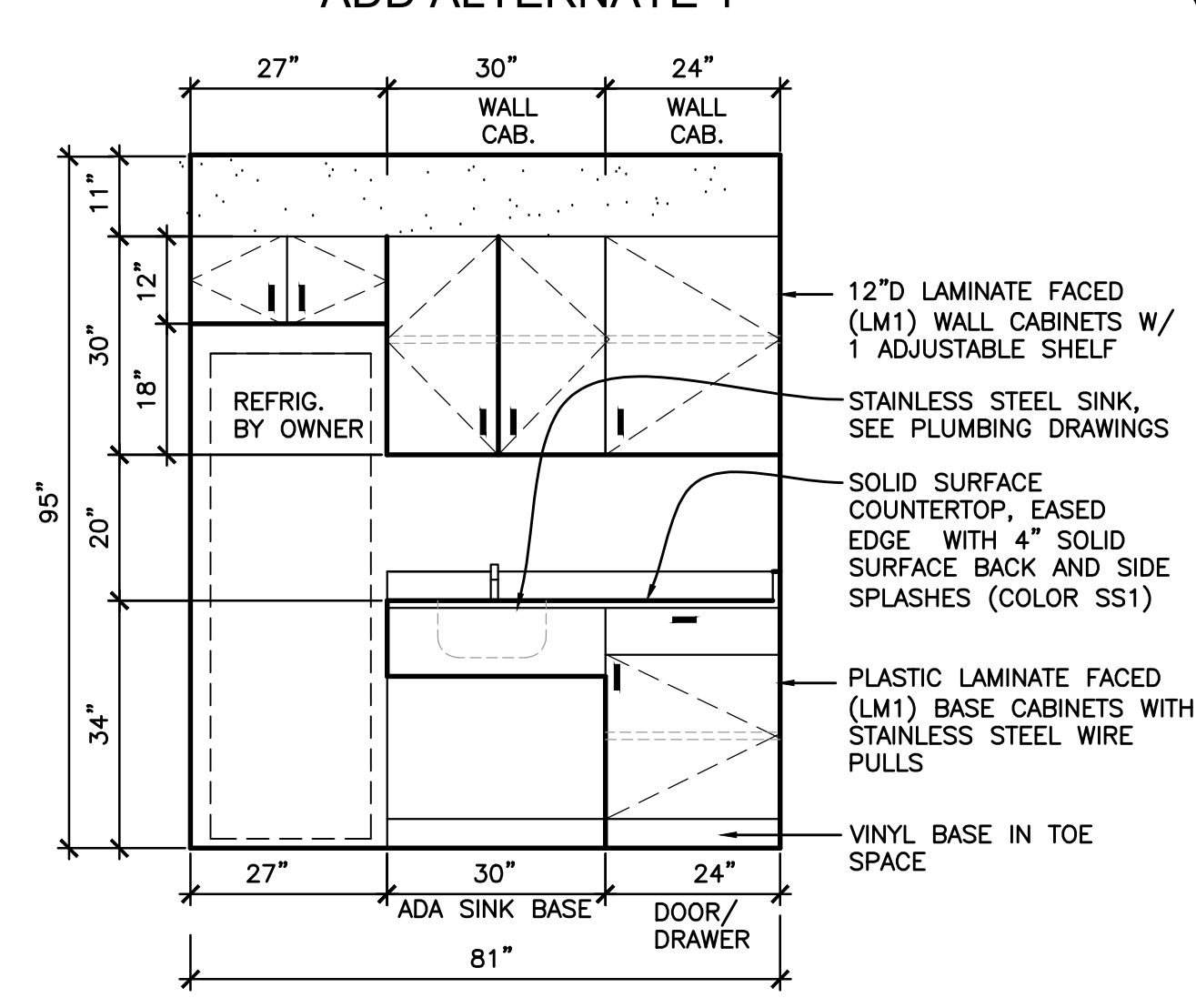


**INT. ELEVATION**

SCALE: 1/2" = 1'-0" SEE ELEVATION 1 FOR TYPICALS.

5

**KITCHENETTE ADD ALTERNATE 1**

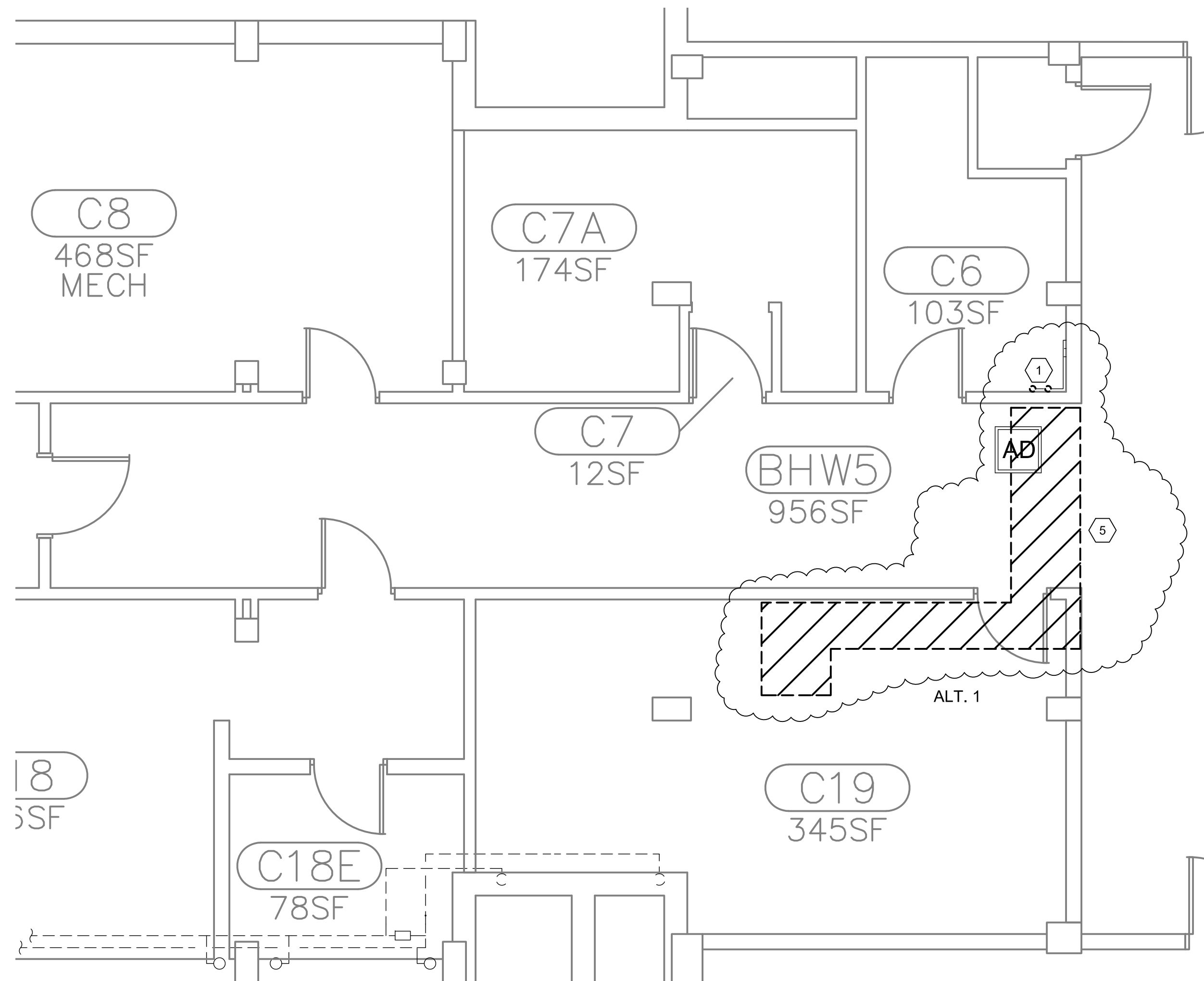


**INT. ELEVATION**

SCALE: 1/2" = 1'-0"

6

CAPITAL PROJ. NO. CP24012	
PR. MGR.	T.PACIFICO
ARCH.	J.KASDORF
MECH.	S.GOERGE
ELEC.	G.HALSEY
CIVIL	
L.A.	
INT. DES.	C.LOCKWOOD
CONST. REP.	T.PACIFICO
APPR.	DURKIN
DATE	8/8/24
SCALE	AS SHOWN
ISSUED	
FOR BID	



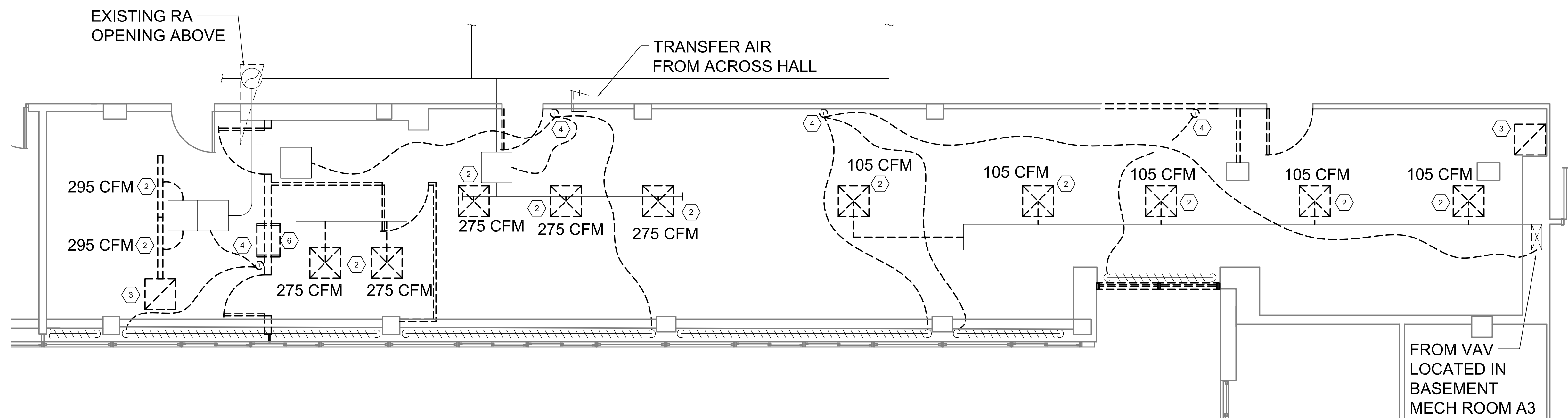
**MECHANICAL BASEMENT DEMOLITION PLAN**  
 SCALE: 1/4" = 1'-0" 1/4"=1'-0" 0 2 4 8

**MECHANICAL GENERAL NOTES:**

1. ALL WORKMANSHIP AND MATERIALS TO FOLLOW MSU STANDARDS OF CONSTRUCTION.

**# MECHANICAL DEMOLITION PLAN NOTES:**

- ALT. 1
1. DEMO EXISTING FILTER AND PREP FOR CONNECTION FOR NEW PLUMBING LINES.
  2. DEMO EXISTING SUPPLY DIFFUSERS AND ASSOCIATED DUCTWORK BACK TO MAIN. PATCH, SEAL, AND PREP DUCTWORK FOR NEW INSTALLATION.
  3. DEMO EXISTING RETURN GRILLE.
  4. DEMO EXISTING THERMOSTAT AND PREP FOR RELOCATION.
- ALT. 1
5. REMOVAL OF ADDITIONAL CEILING MAY BE NECESSARY FOR INSTALLATION OF NEW PLUMBING LINES. CONTRACTOR TO VERIFY.
  6. DEMO EXISTING TRANSFER AIR.



**MECHANICAL 1ST FLOOR DEMOLITION PLAN**  
 SCALE: 1/4" = 1'-0" 1/4"=1'-0" 0 2 4 8

CAPITAL PROJ. NO.  
CP24012

PR. MGR.	T.PACIFICO
ARCH.	J.KASDORF
MECH.	S.GOERGE
ELEC.	G.HALSEY
CIVIL	
L.A.	
INT. DES.	C.LOCKWOOD
CONST. REP.	T.PACIFICO
APPR.	DURKIN
DATE	8/8/24
SCALE	AS SHOWN
ISSUED	
FOR BID	

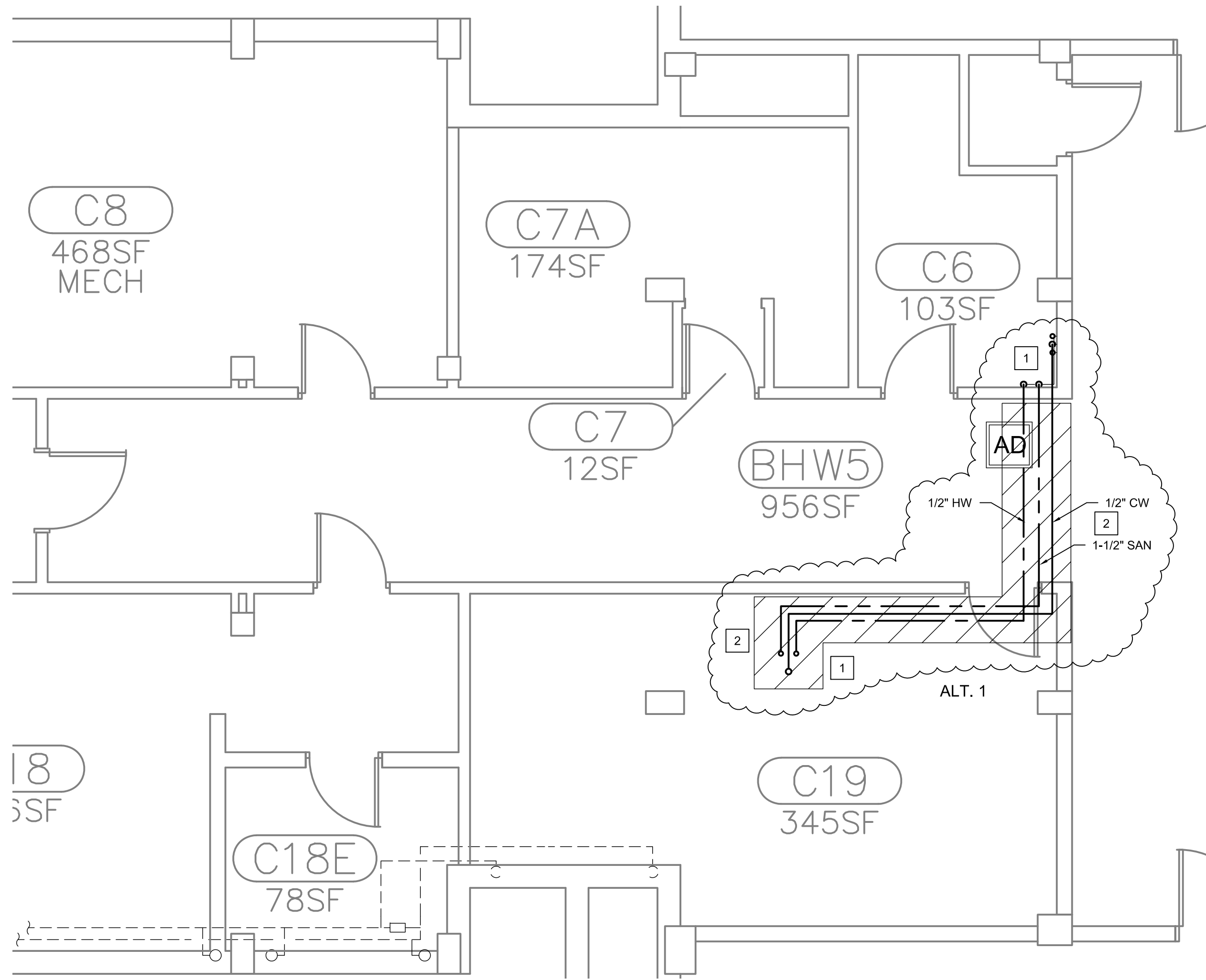
CAPITAL PROJ. NO. CP24012	
PR. MGR.	T.PACIFICO
ARCH.	J.KASDORF
MECH.	S.GOERGE
ELEC.	G.HALSEY
CIVIL	
L.A.	
INT. DES.	C.LOCKWOOD
CONST. REP.	T.PACIFICO
APPR.	DURKIN
DATE	8/8/24
SCALE	AS SHOWN
ISSUED	
FOR BID	

**MECHANICAL GENERAL NOTES:**

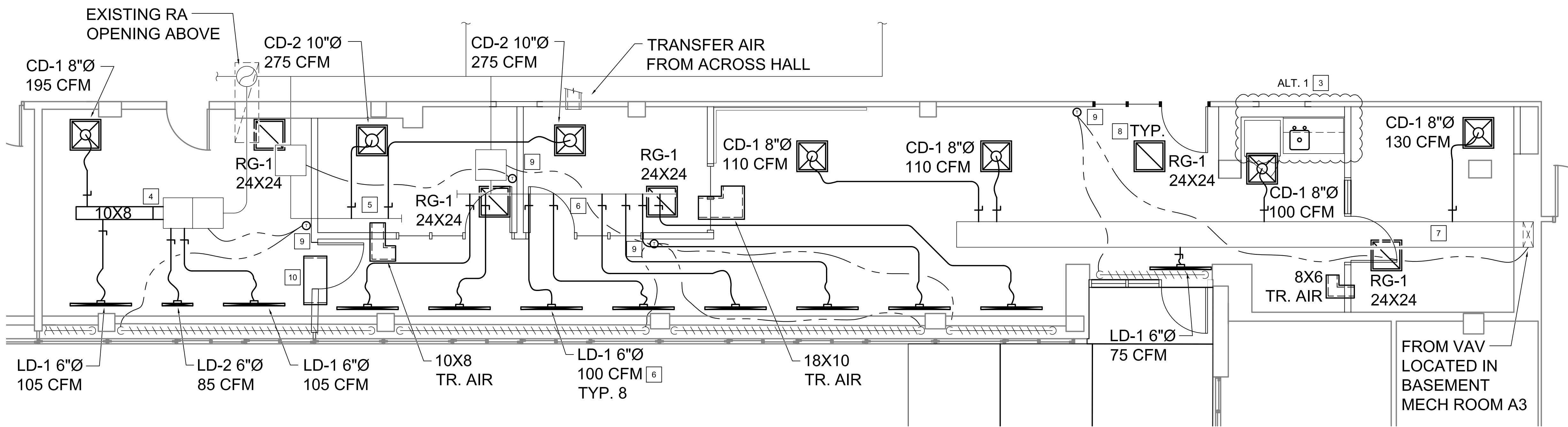
1. ALL WORKMANSHIP AND MATERIALS TO FOLLOW MSU STANDARDS OF CONSTRUCTION.

**# MECHANICAL PLAN NOTES:**

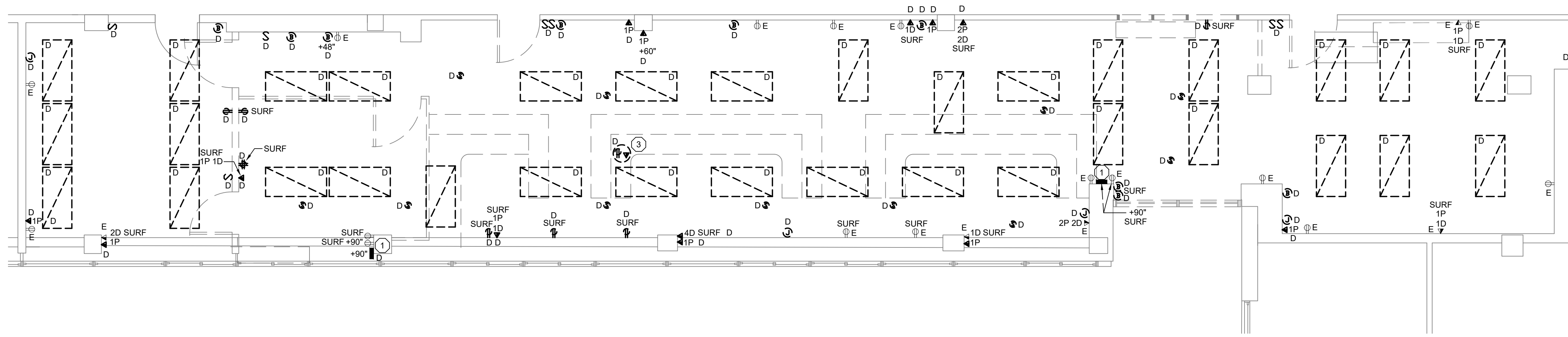
1. CONNECT NEW CW, HW, AND SAN PLUMBING LINES TO EXISTING AND ROUTE UP TO NEW KITCHENETTE IN SPACE ABOVE.
2. REPLACE / REPAIR CEILING AS NECESSARY. CONTRACTOR TO VERIFY.
3. CONNECT CW, HW, AND SAN TO NEW KITCHENETTE SINK AND FAUCET. SINK BASED ON: ELKAY LUSTERTONE MODEL ELUH2115. FAUCET BASED ON: KOHLER FORTE K-10411.
4. CONNECT TO EXISTING VAV PLENUM AND ROUTE AS SHOWN. CONNECT NEW BRANCH SUPPLY LINES WITH VOLUME DAMPERS AND ROUTE TO NEW SUPPLY DIFFUSERS. CEILING DIFFUSERS (CD-1) BASED ON: PRICE SCD. LINEAR DIFFUSERS (LD-1) BASED ON: PRICE SPD, 48" - 1 SLOT, 1" SLOT WIDTH. LINEAR DIFFUSERS (LD-2) BASED ON: PRICE SPD, 24" - 1 SLOT, 1" SLOT WIDTH.
5. CONNECT NEW BRANCH SUPPLY LINES WITH VOLUME DAMPERS AND ROUTE TO NEW SUPPLY DIFFUSERS. CEILING DIFFUSERS (CD-2) BASED ON: PRICE SCD.
6. CONNECT NEW BRANCH SUPPLY LINES WITH VOLUME DAMPERS AND ROUTE TO NEW SUPPLY DIFFUSERS. LINEAR DIFFUSERS (LD-1) BASED ON: PRICE SPD, 48" - 1 SLOT, 1" SLOT WIDTH.
7. CONNECT NEW BRANCH SUPPLY LINES WITH VOLUME DAMPERS AND ROUTE TO NEW SUPPLY DIFFUSERS. CEILING DIFFUSERS (CD-1) BASED ON: PRICE SCD. LINEAR DIFFUSERS (LD-1) BASED ON: PRICE SPD, 48" - 1 SLOT, 1" SLOT WIDTH.
8. LAY-IN RETURN GRILLES (RG-1) BASED ON: PRICE 80. INCLUDE RETURN AIR CANOPY BASED ON: PRICE RAC OR EQUIVALENT. TYP. ALL.
9. RELOCATED EXISTING THERMOSTAT. RECONNECT TO EXISTING VAV BOXES AND FINNED TUBE CONTROL VALVE AS SHOWN. TYP. ALL.
10. NEW 36X12 TRANSFER AIR (TR. AIR), WITH 1" LINING. TYP.



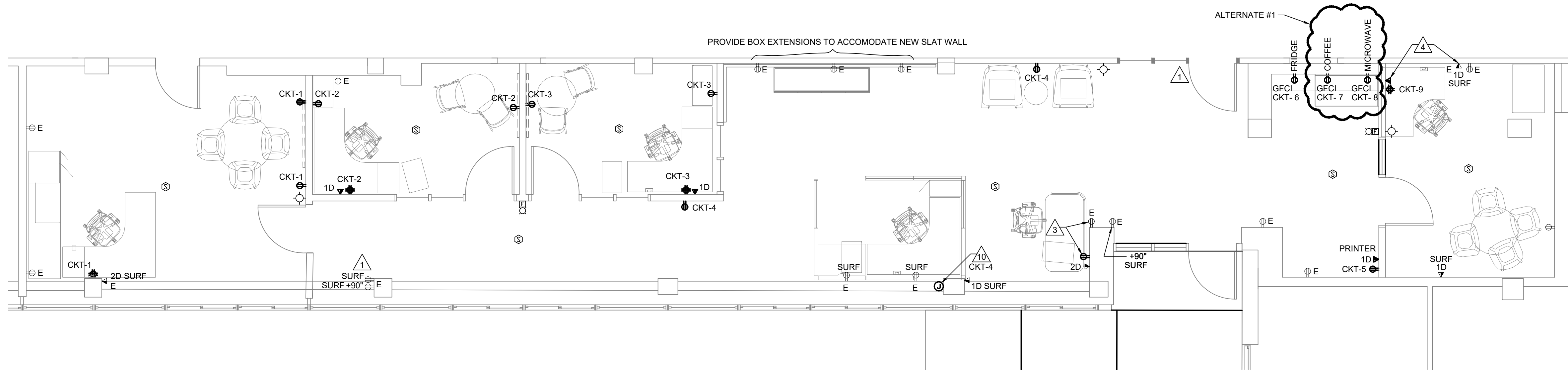
**MECHANICAL BASEMENT PLAN**  
SCALE: 1/4" = 1'-0"



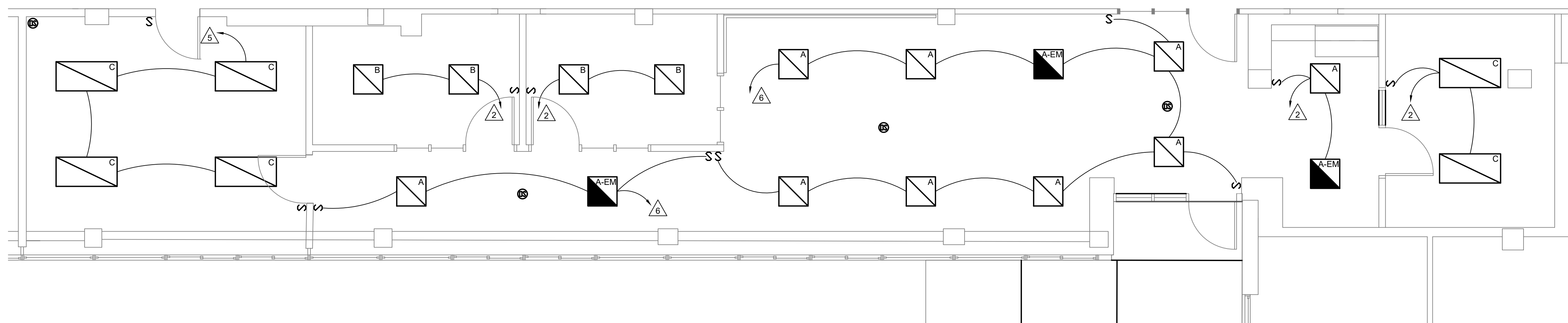
**MECHANICAL 1ST FLOOR PLAN**  
SCALE: 1/4" = 1'-0"



**ELECTRICAL DEMOLITION PLAN**  
SCALE: 1/4" = 1'-0"



**ELECTRICAL PLAN**  
SCALE: 1/4" = 1'-0"



**LIGHTING PLAN**  
SCALE: 1/4" = 1'-0"

LUMINAIRES USED:  
A - METALUX - 22RLN-LD5-31-UNV-L840-CD-1  
A-EM - METALUX - 22RLN-LD5-31-UNV-EL14W-L840-CD-1  
B - METALUX - 22RLN-LD5-35-UNV-L840-CD-1  
C - METALUX - 24RLN-LD5-36-UNV-L840-CD-1

**ELECTRICAL GENERAL NOTES:**

- ELECTRICIAN IS RESPONSIBLE FOR COMPLIANCE WITH MSU TECHNICAL STANDARDS AND ALL OTHER APPLICABLE CODES.
- RE-USE CIRCUITS FROM DEMOLISHED RECEPTACLES AND FURNITURE FEEDS FOR NEW RECEPTACLES AND FURNITURE FEEDS. QUANTITY OF CIRCUITS NEEDED IS INDICATED ON THE PLANS (CKT-1, CKT-2 ETC.). IF ADDITIONAL CIRCUITS ARE REQUIRED, USE PANEL LP-E FOR THE EAST END OF THE SUITE AND PANEL LP-F FOR THE WEST END OF THE SUITE. INDICATE CIRCUITS USED ON AS-BUILT DRAWINGS. UPDATE PANELBOARD CIRCUIT DIRECTORIES.
- CONNECT NEW FIRE ALARM DEVICES TO EXISTING NATIONAL TIME FIRE ALARM SYSTEM.
- REMOVE ALL EXISTING TELEPHONE LINES, JACKS, BOXES ETC.
- CONNECT NEW FIRE ALARM DEVICES TO EXISTING FIRE ALARM SYSTEM. COORDINATE WITH MSU PRIOR TO COMMENCEMENT OF WORK.

**ELECTRICAL DEMOLITION NOTES:**

- PRIVACY WHITE NOISE GENERATORS WITH SPEAKERS INSTALLED IN CEILING. REMOVE ALL SPEAKERS AND CONTROLLERS. RECEPTACLES TO REMAIN.

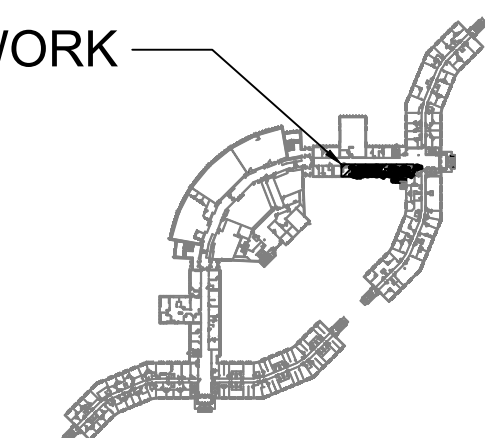
**ELECTRICAL PLAN NOTES:**

- PROVIDE WIRELESS DOOR CHIME. SECURI M508 + D7 DOOR SENSOR CHIME WITH ADJUSTABLE CHIME. INSTALL MAGNETIC SENSOR AT THE TOP OF THE DOOR. PLUG THE CHIME INTO THE RECEPTACLE AT 90°. ADJUST SETTINGS AND LOCATION OF CHIME PER OCCUPANTS INSTRUCTIONS.
- CONNECT TO EXISTING LIGHTING CIRCUIT. REFER TO LIGHTING CONTROL DETAIL #2.
- RE-LOCATE EXISTING SURFACE MOUNTED RECEPTACLE FROM NORTH FACE OF WALL TO WEST FACE OF WALL TO SERVE STUDENT DESK.
- RE-LOCATE EXISTING PHONE AND DATA DROP/JACKS FROM NORTH WALL TO WEST WALL TO SERVE NEW DESK.
- CONNECT TO EXISTING LIGHTING CIRCUIT. REFER TO LIGHTING CONTROL DETAIL #1.
- CONNECT TO EXISTING LIGHTING CIRCUIT. REFER TO LIGHTING CONTROL DETAIL #3.
- NOT USED.
- NOT USED.
- NOT USED.
- PROVIDE 120V FLEXIBLE CONNECTION TO POWERED FURNITURE. COORDINATE EXACT REQUIREMENTS WITH FURNITURE SUPPLIER.

**SYMBOLS AND ABBREVIATIONS:**

- 2' X 2' RECESSED LED TROFFER WITH EMERGENCY BATTERY PACK
- 2' X 2' RECESSED LED TROFFER
- 2' X 4' RECESSED LED TROFFER
- RECESSED DOWNLIGHT
- CEILING MOUNTED OCCUPANCY SENSOR
- LIGHT SWITCH
- DATA/PHONE RECEPTACLE
- 20A, 120V DUPLEX RECEPTACLE
- 20A, 120V QUADRUPLEX RECEPTACLE
- JUNCTION BOX
- CEILING MOUNTED INDICATOR LIGHT/ANNUNCIATOR
- ABOVE FINISHED FLOOR
- DEMOLISH - DISCONNECT AND REMOVE ALL BOXES, CONDUIT, AND WIRE. PATCH AND REPAIR BY GENERAL TRADES UNLESS NOTED OTHERWISE.
- EXISTING
- FIRE ALARM - COMBINATION SPEAKER STROBE
- FIRE ALARM - STROBE
- FIRE ALARM - SMOKE DETECTOR

AREA OF WORK

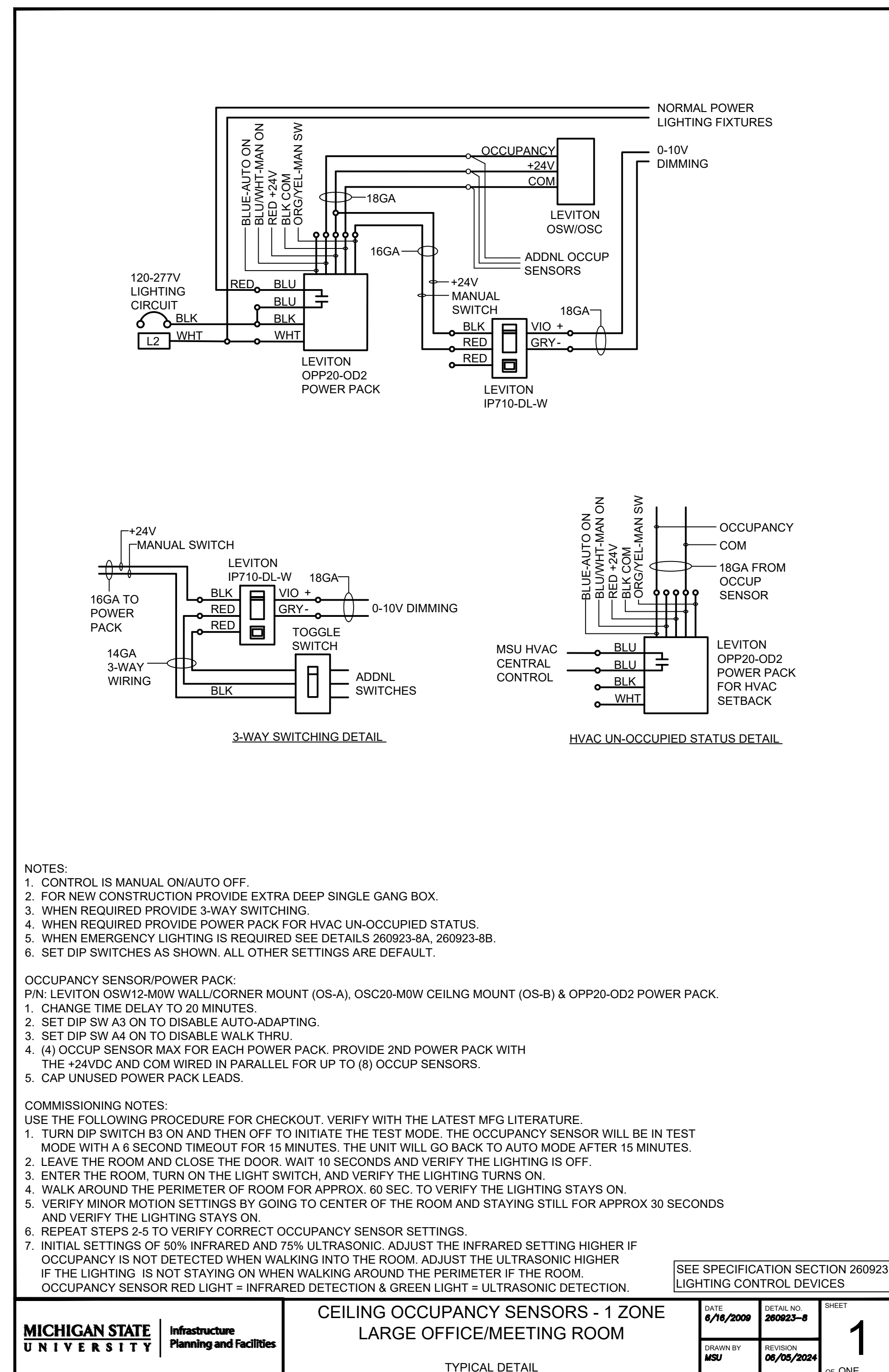


**BUILDING KEY PLAN**  
FOR REFERENCE ONLY

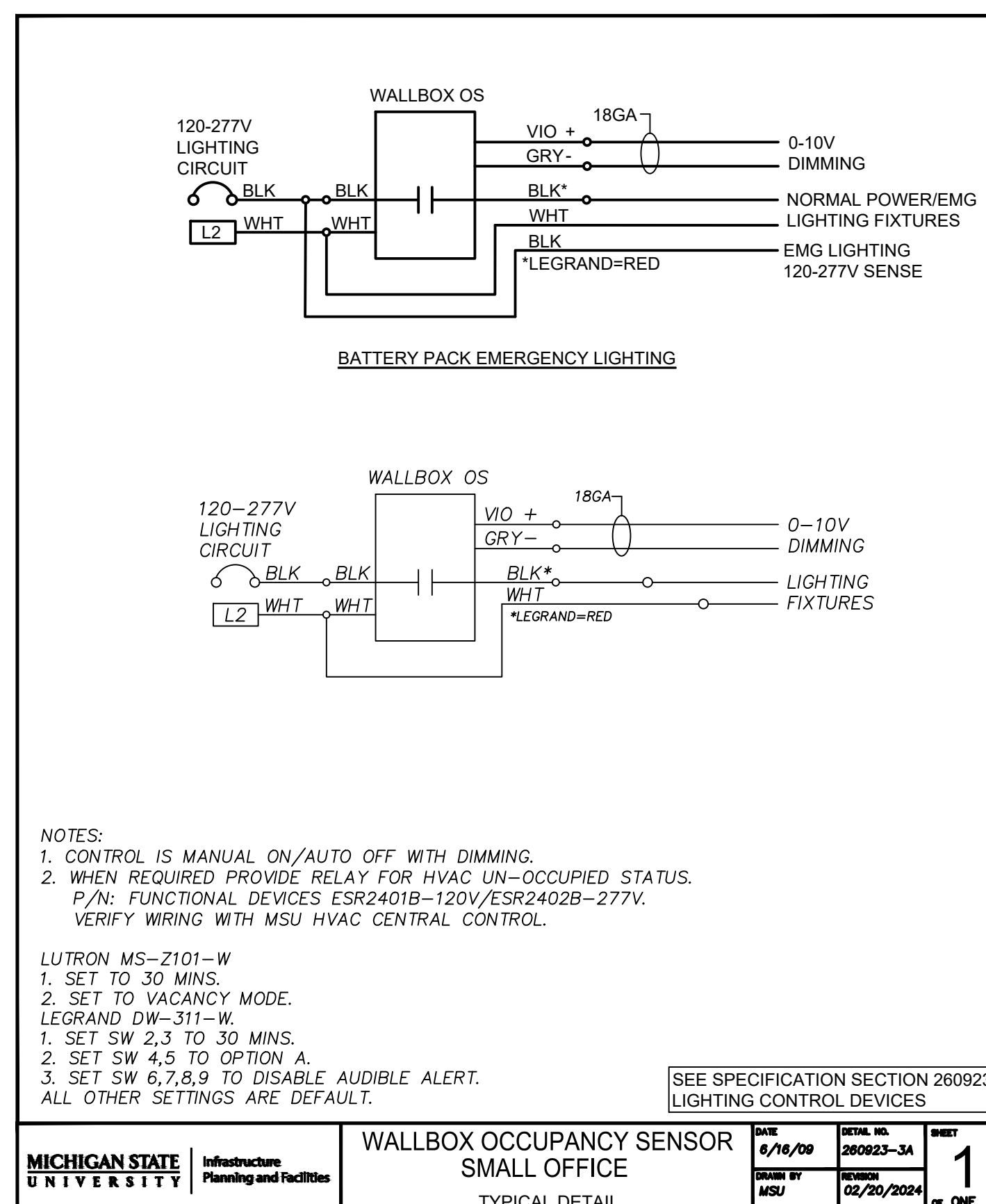
MSU PROJ. NO.  
CP24012

PR. MGR. T.PACIFICO  
ARCH. J.KASDORF  
MECH. S.GOERDE  
ELEC. G.HALSEY  
CIVIL \_\_\_\_\_  
L.A. \_\_\_\_\_  
INT. DES. C.LOCKWOOD  
CONST. REP. T.PACIFICO  
APPR. DURKIN  
DATE 8/8/24  
SCALE AS SHOWN  
ISSUED \_\_\_\_\_  
FOR BID \_\_\_\_\_

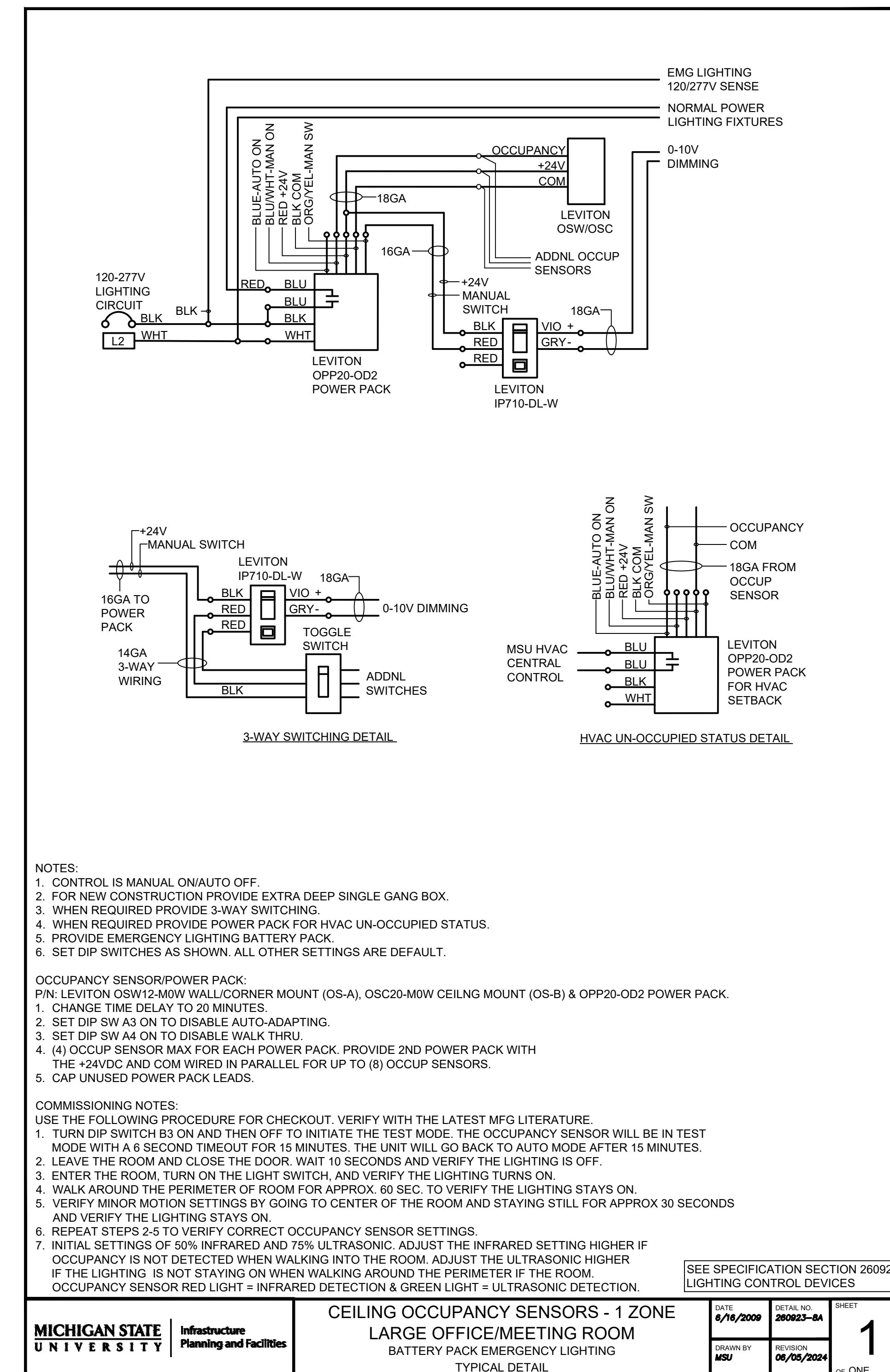




LIGHTING CONTROL DIAGRAM #1



LIGHTING CONTROL DIAGRAM #2



LIGHTING CONTROL DIAGRAM #3

MSU PROJ. NO.	CP24012
PR. MGR.	T. PACIFICO
ARCH.	J. KASDORF
MECH.	S. GOERGE
ELEC.	G. HALSEY
CIVIL	
L.A.	
INT. DES.	C. LOCKWOOD
CONST. REP.	
APPR.	DURKIN
DATE	8/8/24
SCALE	AS SHOWN
ISSUED FOR BID	