

MICHIGAN STATE U N I V E R S I T Y

INFRASTRUCTURE PLANNING AND FACILITIES PLANNING, DESIGN AND CONSTRUCTION

January 7, 2026

TITLE OF PROJECT: Union – Sparty Store Renovations – Rooms 111, 117 and 117A

PROJECT ISSUE DATE: November 17, 2025

PROJECT NUMBER: CP25028

ADDENDUM NO: 03

GENERAL

This Addendum is issued prior to receipt of Proposals to amend the Contract Documents identified as Union – Sparty Store Renovations – Rooms 111, 117 and 117A.

Except as otherwise specifically mentioned, the general character of the work required by this Addendum shall be the same as originally specified, and all incidentals required in connection with the work hereinafter described shall be included even though not specifically mentioned. When an item is mentioned with additional specifications given, reference shall be made to the original specifications.

Drawing(s) accompanying this Addendum include: N/A

☐ No drawings accompany this Addendum

<u>ITEM NO.</u>	<u>DESCRIPTION</u>
-----------------	--------------------

- | | |
|---|--------------------------------------------------------------------------------------|
| 1 | Response to additional RFI's received post 12/23/25. See attached Document – RFI Log |
| 2 | Data sheet for ACT-2 Materials |

End of Addendum

[illegible]

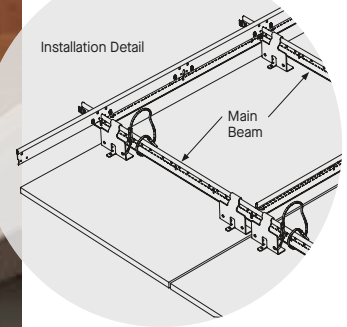
WOODWORKS® Concealed

Concealed Suspension



FAST134
Select Items Ship Fast
armstrongceilings.com/fast134

CAD/Revit® drawings at:
armstrongceilings.com/cadrevit



WoodWorks® Concealed 24" x 96" panels with W2 perforation in Plain Slice Cherry

This easy-to-install ceiling with a concealed suspension offers a continuous, monolithic visual.

KEY SELECTION ATTRIBUTES



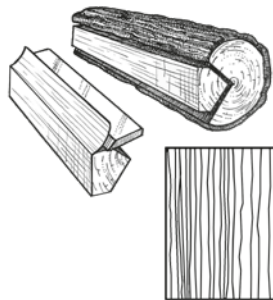
- Standard veneers feature various species and cuts for beautiful wood visuals
- ASTM E84 Class A Fire Performance
- The natural warmth of wood can contribute to biophilic designs and building certification standards like the WELL™ v2 "Nature and Place" feature
- Acoustical fleece for increased sound absorption
- Select products included in the FAST134 program – ready to ship in 4 weeks or less
- Hook-on panels (for standard 15/16" suspension system) provide safe and secure downward accessibility
- Shorter lead times and lower cost than custom millwork
- Factory edgebanded for superior quality
- Complete standard system from one manufacturer including panels, suspension system, clips, and trim
- CleanAssure™ family of products – includes disinfectable panels, suspension systems, and trim
- FSC® certified wood available as a premium quoted option (FSC® C007626)
- USDA Biobased content: 100%
- Made in the U.S.A. of domestic and global content
- Build America, Buy America (BABA) Act compliant

VENEER CUTS

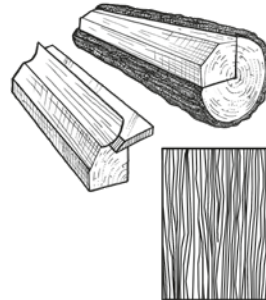
Different cuts of a log will yield different graining visuals. Choose your veneer to achieve your desired look.



Plain Sliced
Produces the well known cathedral or loop-grain effect.



Quarter Sliced
Produces a striped, often straight-grain effect.



Rift Sliced
Produces a tight, linear grain along the entire length of the veneer.

TechLine 877 276-7876
armstrongceilings.com/woodworksconcealed

Armstrong®
World Industries

WOODWORKS® Concealed

Concealed Suspension

RECYCLED
CONTENT

LEED V5

UP TO
80%

USDA
CERTIFIED
BIOBASED
PRODUCT
PRODUCT 100%

COMMON MATERIALS FRAMEWORK

Human Health

Climate Health

EPD

Ecosystem Health

EPD

Circular Economy

✓

OCCUPANT EXPERIENCE

Acoustics

✓

FINISH RANGES

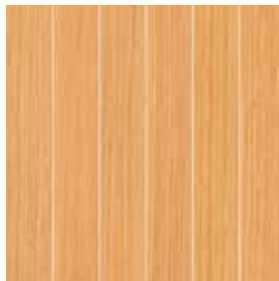
The carefully curated species and veneer cuts offer a beautiful natural variation. The images here reflect the visual range that is likely within our product. Darkest to lightest tones may occur within an installation due to the character of wood.



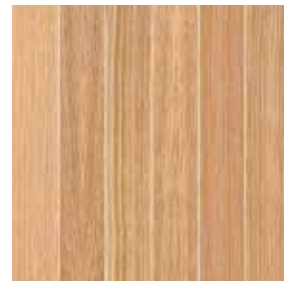
Plain Slice White Maple (NWM)



Plain Slice White Ash (NWA)



Vertical Grain Fir (NVF)



Rift White Oak (NRO)



Plain Slice White Oak (NOK)



Plain Slice Cherry (NPC)



Quartered Mahogany (NGM)



Quartered Sapele (NQS)



Quartered Walnut (NGW)



Plain Slice Walnut (NWN)

CUSTOM FINISHES



Custom Wood
Species and Finishes
Available

LEGACY VENEERS

Natural Variations™
Plain Slice

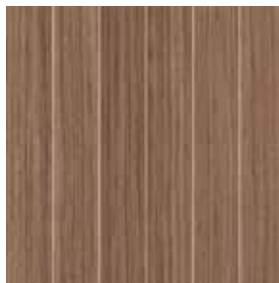


Maple (NMP)



Light Cherry (NLC)

Constants™
Vertical Grain



Walnut (CWA)



Redux Wood Wheat (CRW)

Due to printing limitations, shade may vary from actual product.



WOODWORKS® Concealed

Concealed Suspension

RECYCLED
CONTENT

LEED V5

UP TO
80%

USDA
CERTIFIED
BIOBASED
PRODUCT
PRODUCT 100%

COMMON MATERIALS FRAMEWORK

Human Health

Climate Health

Ecosystem Health

Circular Economy

OCCUPANT EXPERIENCE

Acoustics

EPD

EPD

✓

✓

VISUAL SELECTION

Edge Profile	Item No. ♦	Dimensions Nominal W x L x H (Inches)	Perforations
WOODWORKS® Concealed 1/4" Reveal	5983F01	24 x 48 x 3/4"	W1, W2, W3, W4, W5, W6
	5984F01	24 x 72 x 3/4"	W1, W2, W3, W4, W5, W6
	5985F01	24 x 96 x 3/4"	W1, W2, W3, W4, W5, W6

FAST
4 WEEKS
or Less

FAST134 program items ready to ship from manufacturer in 4 weeks or less.
Up-to-date lead times and product options (sizes and colors) at armstrongceilings.com/fast134

FSC® certified WOODWORKS® Concealed 1/4" Reveal	5983F02	24 x 48 x 3/4"	W1, W2, W3, W4, W5, W6
	5984F02	24 x 72 x 3/4"	W1, W2, W3, W4, W5, W6
	5985F02	24 x 96 x 3/4"	W1, W2, W3, W4, W5, W6



♦ When specifying or ordering, include the appropriate 2-digit perforation and 3-letter color suffixes.
For veneers, sizes, and perforation patterns available as special order, call TechLine at 1 877 276-7876.

PERFORMANCE

Dots represent high
level of performance.

Fire Rating	CleanAssure™ Disinfectable Panels	Fog	Spray	Wipe
Class A	•	•	•	•
Class A	•	•	•	•
Class A	•	•	•	•

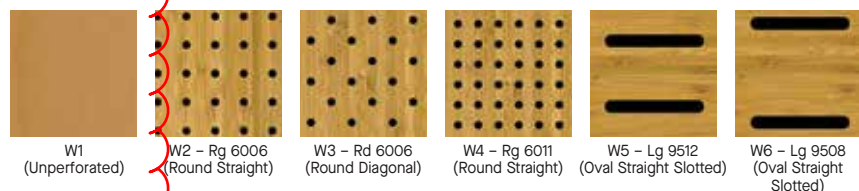
ACOUSTICAL INFORMATION

Perforation	Infill Panel Item No.	Description	NRC
W1 Unperforated			N/A
W2 Round Straight	8200T10 1713BL	Fiberglass School Zone® Fine Fissured™	0.45 0.55
	2820BK	Calla®	0.55
	5823	BioAcoustic™	0.40
	5479	BioAcoustic	0.40
	1318	Backstage Noir®	0.55
W3 Round Diagonal	8200T10 1713BL	Fiberglass School Zone Fine Fissured	0.45 0.55
	2820BK	Calla	0.55
	5823	BioAcoustic	0.40
	5479	BioAcoustic	0.40
	1318	Backstage Noir	0.55
W4 Round Straight	8200T10 1713BL	Fiberglass School Zone Fine Fissured	0.60 0.60
	2820BK	Calla	0.65
	5823	BioAcoustic	0.65
	5479	BioAcoustic	0.65
	1318	Backstage Noir	0.60
W5 Oval Straight Slotted	8200T10 1713BL	Fiberglass School Zone Fine Fissured	0.50 0.50
	2820BK	Calla	0.55
	5823	BioAcoustic	0.45
	5479	BioAcoustic	0.45
	1318	Backstage Noir	0.55
W6 Oval Straight Slotted	8200T10 1713BL	Fiberglass School Zone Fine Fissured	0.40 0.35
	2820BK	Calla	0.35
	5823	BioAcoustic	0.45
	5479	BioAcoustic	0.45
	1318	Backstage Noir	0.35

EXAMPLE: **5983 F02 W2 NWM**

Panel Dimension/Type: 2' x 4'
Substrate: FSC-certified
Perforation: W2 Round Straight Rg 6006
Finish: Plain Slice White Maple

PERFORATION OPTIONS (Actual 1:6 scale shown)



NOTE: Slotted perforations run parallel to the length of the panel and borders vary with panel size.



Custom
Perforations
Available

TechLine 877 276-7876

armstrongceilings.com/woodworksconcealed

Armstrong®
World Industries

WOODWORKS® Concealed

Concealed Suspension

RECYCLED
CONTENT

UP TO
80%

LEED V5

COMMON MATERIALS FRAMEWORK

Human Health

Climate Health

Ecosystem Health

EPD

EPD

Circular Economy

✓

OCCUPANT EXPERIENCE

Acoustics

✓

When ordering suspension system materials, please note that this product requires Prelude® Heavy-duty (HD) main beams and 2' cross tees that are full height (1-11/16"). Both suspension system components should be specified in Black (BL). 15/16" Prelude® BL HD (Black)

ACCESSORIES

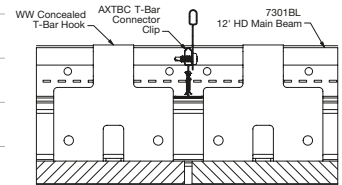
	Item No. ◆	Description	Dimensions Nominal W x L x H (Inches)	Color	PCS/ CTN
Suspension Systems	7301	Prelude® XL® 12' HD Main Beam	15/16" x 144" x 1-11/16"	Black	20
	XL8320BL	Prelude XL 2' Cross Tee	15/16" x 144" x 1-11/16"	Black	60
	7800BL	Angle Wall Molding	7/8" x 144" x 7/8"		30
	SH12	Support Hanger	144" x 2"		12
Accessories	6091	Safety Cable	N/A	N/A	50
	6408_ _ _	3/4" Edge Banding	3/4" x 300"	All Veneers	1
	5986	T-Bar Hook†	4" x 2" x 3"		50
	7123PKG300	Wood Screws	5/8"		300/PKF
Infill Panels	1713BL	Fine Fissured™ Lay-in Panel	24" x 24" x 3/4"	Black	14
	2820BK	Calla® Lay-in Panel	24" x 24" x 1"	Black	10
	5479	BioAcoustic™ Infill Panel	24" x 24" x 5/8"	Beige Matte	12
	1318	Backstage Noir® Square Lay-in Panel	24" x 24" x 3/4"	Black	12
	5823	BioAcoustic Infill Panel	24" x 24" x 5/8"	Black Matte	12
	8200T10	Fiberglass Infill Panel	24" x 24" x 1"	Black Gloss	12
Perimeter Trim	6481F01W1H6_ _ _	6" Veneered Trim with 4 Clips – Item 5925 (With Faux Wood Edgebanding on long edges)	6" x 96" x 3/4"	All Veneers	4
	6481F01W1H8_ _ _	8" Veneered Trim with 4 Clips – Item 5925 (With Faux Wood Edgebanding on Long Edges)	8" x 96" x 3/4"	All Veneers	4
	AX_VESTR_ _ _	Axiom® Vector Straight Trim – Recommend in Black 6" and up	N/A	Silver Grey, Black, Gun Metal	10 LF
	AX_VECUR_ _ _	Axiom Vector Curved Trim – Recommend in Black 6" and up	N/A	Silver Grey, Black, Gun Metal	10 LF
	6603W1BL	WoodWorks® Concealed Trim	6" x 120" x 6"	Black	6
	7239	Adjustable Trim Clip	N/A	Mill Finish	50
FSC® Certified Premium Trim*	6481F02W1H6_ _ _	6" FSC Veneered Trim with 4 Clips – Item 5925 (With Faux Wood Edgebanding on long edges)	6" x 96" x 3/4"	All Veneers	4
	6481F02W1H8_ _ _	8" FSC Veneered Trim with 4 Clips – Item 5925 (With Faux Wood Edgebanding on Long Edges)	8" x 96" x 3/4"	All Veneers	4

◆ When specifying or ordering, include the appropriate 3-letter color suffix that coordinates with your WoodWorks ceiling (e.g. 6408 **N W M**).

* FSC-certified wood is a premium option available through ASQuote.

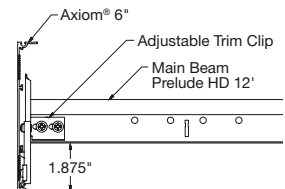
† For 24" x 48" panel, install 4 hooks; for 24" x 72" panel, install 6 hooks; for 24" x 96" panel, install 8 hooks.

NOTE: Three screws per hook. Refer to armstrongceilings.com/installation for a better understanding of suspension systems requirements.



Installation Detail –
WoodWorks® Concealed Ceiling System

INSTALLATION OF TRIM (ALUMINUM SUBSTRATE) FOR WOODWORKS® PANELS



Adjustable Trim Clip (7239)
in standard position

PHYSICAL DATA

Material

Fire-rated particle board (FRPB) with real wood veneers.
Vertical Grain Fir (NVF) is FRPB with a reconstituted veneer.

Surface Finish

Clear or tinted semi-gloss coating

Fire Performance

Class A: ASTM E84 surface burning characteristics.
Flame Spread Index 25 or less. Smoke Developed
Index 50 or less.

CAN/ULC S102 surface burning characteristics.
Flame Spread Rating 25 or less. Smoke Developed
Classification 50 or less.

ASTM E1264 Classification

Type XX – Fire Class A

Primary (Embodied) Energy

See all LCA information on our EPDs.

Application Considerations

Variation among panels may occur due to the natural
characteristics of the wood and grain.

Use of large wood panels may result in deflection up to 1/8"
and cause alignment inconsistency due to size and ambient
conditions.

It is very important that WoodWorks® panels are climatized
prior to installation. Relative humidity between 25% and

55%, and temperatures between 50°F and 86°F, must be
maintained throughout the life of the product.

Design Considerations

All perforated panels are standard with fleece attached. Panels
without fleece must be specified.

Do not mix different panel sizes with slotted perforations.

Perforation borders will not align. The use of Armstrong®

Prelude® 15/16" suspension system is strongly recommended.

Cloud installations less than 6' wide are not recommended.

Not recommended for SingleSpan™ corridor applications.

Design & Pre-Construction Service

For complimentary design and pre-construction assistance,
contact ProjectWorks® or visit
armstrongceilings.com/projectworks

Specification Consideration

Attention: For FSC® certified wood products to maintain their
CoC certification, products must be sold to a CoC certified
distributor, or directly to the installing contractor. Failure to
do so breaks the CoC.

Seismic Restraint

WoodWorks Concealed panels have been engineered, tested,
and approved for application in all seismic areas when installed
per Armstrong Ceilings installation instructions.

Cleaning and Disinfecting

Cleaning and CDC-approved disinfecting options available
on armstrongceilings.com/cleaning

FAST134 Program Considerations

Size of Job Matters: Big jobs, over 2500 SF or 50 pieces for shapes/
vertical elements will have longer lead times.

Location Matters: Transit time not included. We are ready to ship
in 1 week on FAST1 items. However, transit to the states west of
Wyoming may add time.

Distributor Truck Schedule Matters: We rely on distribution to
help move products around the country. When speed matters, work
with your local distributor to ensure FAST134 service.

Stock vs. Made-to-Order Matters: FAST3 & FAST4 items are
made-to-order and will ship direct to distributor. FAST1 (stocked
items) will go through distribution and depend on distributor
truck schedules.

Warranty

Details at armstrongceilings.com/warranty

Weight/Square Feet

5983F01, 5984F01, 5985F01 – 2.75 LBS/SF; bulk packaged per
order. Suspension system, hardware, and accessories
ordered separately.

LEED® is a registered trademark of the U.S. Green Building Council; Living Building Challenge® (LBC) is a registered
trademark of the International Living Future Institute®; WELL™ and WELL Building Standard™ are trademarks
of the International WELL Building Institute; FSC® is a registered trademark of Forest Stewardship Council®,
A.C., license code FSC-C007626; Revit® is a registered trademark of Autodesk, Inc.; all other trademarks
used herein are the property of AWI Licensing LLC and/or its affiliates © 2025 AWI Licensing LLC

TechLine / 1 877 276-7876
armstrongceilings.com/woodworksconcealed
BPCS-5105-1025

Armstrong®
World Industries

WOODWORKS® – Standard

